

**TRADE EXCLUSIVE**

# 3.6M VERSADECK COMPOSITE FASCIA TRIM



Cladco VersaDeck composite fascia boards provide the perfect finishing touch for your VersaDeck project. Featuring a durable protective shell, these boards offer excellent resistance to weathering and UV damage. They effectively seal gaps around your installation, preventing debris ingress and ensuring a clean, polished finish.

## COLOUR RANGE

BURNT OAK	ONYX	PLATINUM
SANDSTONE	PEWTER	ROSEWOOD

## TRIM SPECIFICATIONS

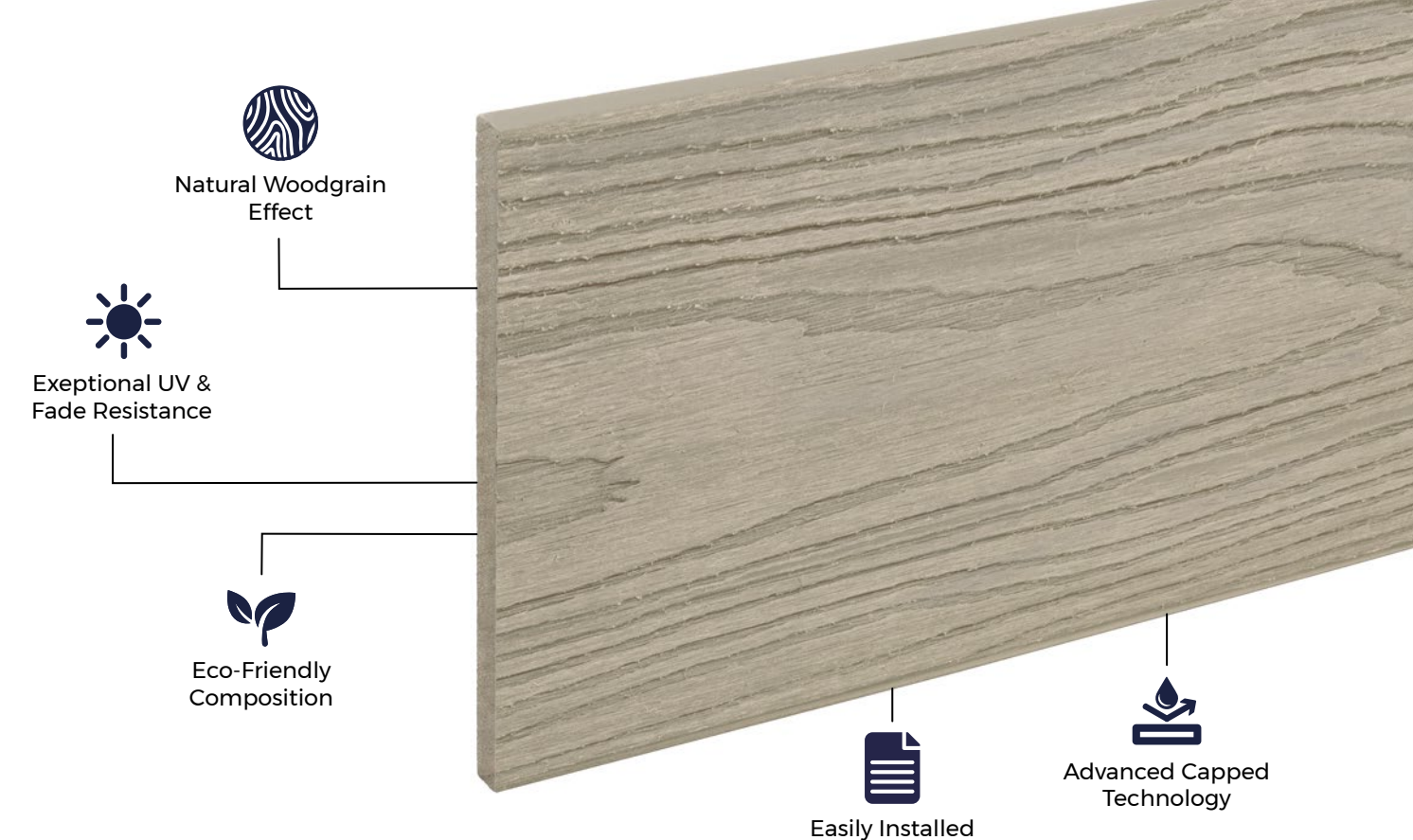
Length	3.6m
Width	148mm
Thick9mm	9mm
We6.48kg (approx)	6.48kg (approx)






## TEST CERTIFICATIONS

FSC® Certification		SA-COC-005542
SKU	Burnt Oak Onyx Platinum Rosewood Sandstone Pewter Quartz	WPCEFTB36V WPCEFTO36V WPCEFTP36V WPCEFTR36V WPCEFTS36V WPCEFTPE36V WPCEFTQ36V



**Please Note:** Images are for illustration purposes only. Actual products may vary slightly from those shown.



 <h3>MATERIALS</h3> <p>Made from a sustainable blend of recycled hardwood fibres and recycled plastic, capped with a durable polymer shell.</p>	 <h3>SURFACES</h3> <p>Features an authentic woodgrain effect to provide a natural and premium appearance to your VersaDeck project.</p>	 <h3>ACCESSORIES</h3> <p>The fascia boards can be easily fixed using 50mm SPEEDDEKZ screws or CTI adhesive for a secure fit.</p>	 <h3>LOW MAINTENANCE</h3> <p>Cladco VersaDeck composite fascia boards provide a long-lasting, weather-resistant finish to your VersaDeck project.</p>	 <h3>LONG-LASTING</h3> <p>Unlike timber or standard composite boards, these VersaDeck fascia boards require minimal upkeep, saving you time and effort.</p>
---	---	--	---	---

## RECYCLED MATERIALS

Cladco VersaDeck composite fascia trims feature a core made from 100% recycled materials, comprising recycled hardwood fibres and recycled post-consumer plastics, helping to reduce environmental impact.

Our VersaDeck range incorporates this composite core with a durable polymer protective shell, enhancing the board's resistance to weather, scratches, stains, and UV fading.

All Cladco composite products are available as FSC® Certified at no additional cost. If you require FSC® Certified products, please request them when placing your order. FSC® Certified products, please ask for these when placing your order.

## AFTERCARE

Over time, VersaDeck composite fascia boards may collect dirt from outdoor exposure. For routine cleaning, simply brush away debris such as leaves, berries, and animal droppings.

For more stubborn grime, gently clean the boards with warm, soapy water to restore their appearance.

## INSTALLATION ADVICE

### Screws

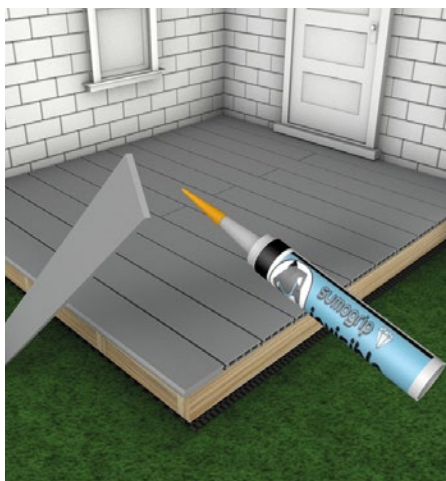
Fix VersaDeck composite fascia boards to your VersaDeck composite decking boards or joists using 50mm SPEEDDEKZ deck screws. Ensure screws are positioned at least 13mm from the edge of each fascia board.

### Adhesive

A strong adhesive such as Cladco high strength adhesive can also be used to install the fascia boards.

### Screws and Adhesive

For optimal results, use a combination of screws and adhesive. Alternate between adhesive and screws every 150mm to achieve a secure and professional finish.



## TEMPERATURE EXPANSION

The capped polymer shell on the composite core reduces the boards' susceptibility to temperature fluctuations, making VersaDeck boards highly resistant to expansion and contraction caused by heat and cold. This stability makes them an excellent choice for durable cladding.

Additionally, the polymer shell offers enhanced protection against weathering and provides improved insulation, helping to regulate indoor temperatures and lower heating and cooling costs.

For detailed information about installation, please read our VersaDeck composite installation guides

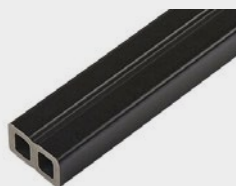
## PRODUCT ACCESSORIES



**VERSADECK COMPOSITE  
CORNER TRIM**



**SPEEDDEKZ SCREWS**



**COMPOSITE BATTENS**



**CTI ADHESIVE**



[www.cladco.co.uk](http://www.cladco.co.uk)  
T: 01837 659901 E: [info@cladco.co.uk](mailto:info@cladco.co.uk)

**CLADCO**  
PROFILES