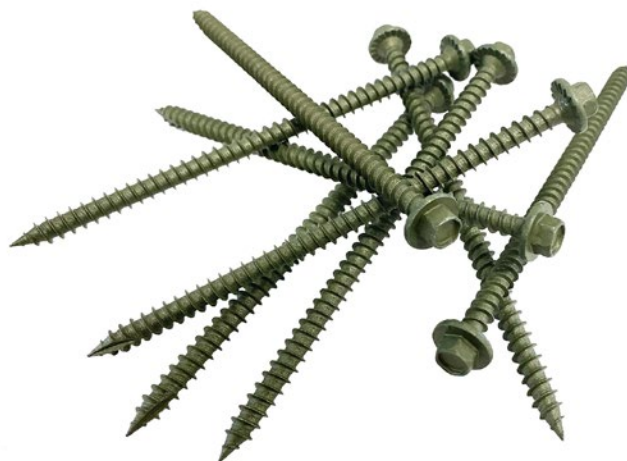


# 90MM & 125MM PLASTIC LUMBER SUBFRAME FIXINGS



Cladco plastic lumber subframe fixings are 6.5 mm hex head screws designed for joining subframe components in recycled plastic and composite systems. They're suited to building and tying together joists and rails in typical decking subframe layouts, balancing strength, ease of installation and value.



MANUFACTURED FROM STRONG  
RUSPERT®-COATED STEEL



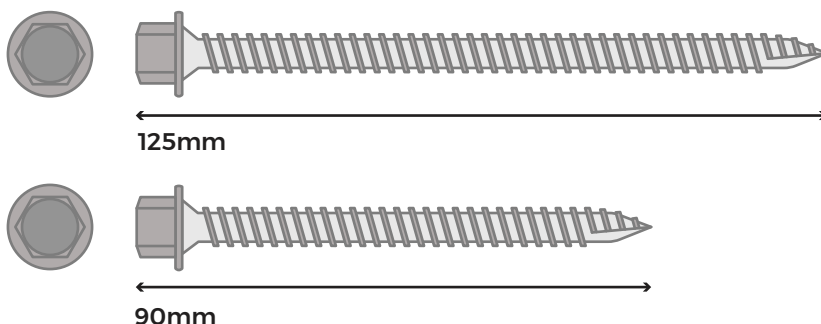
IDEAL FOR RECYCLED PLASTIC &  
COMPOSITE SUBFRAMES

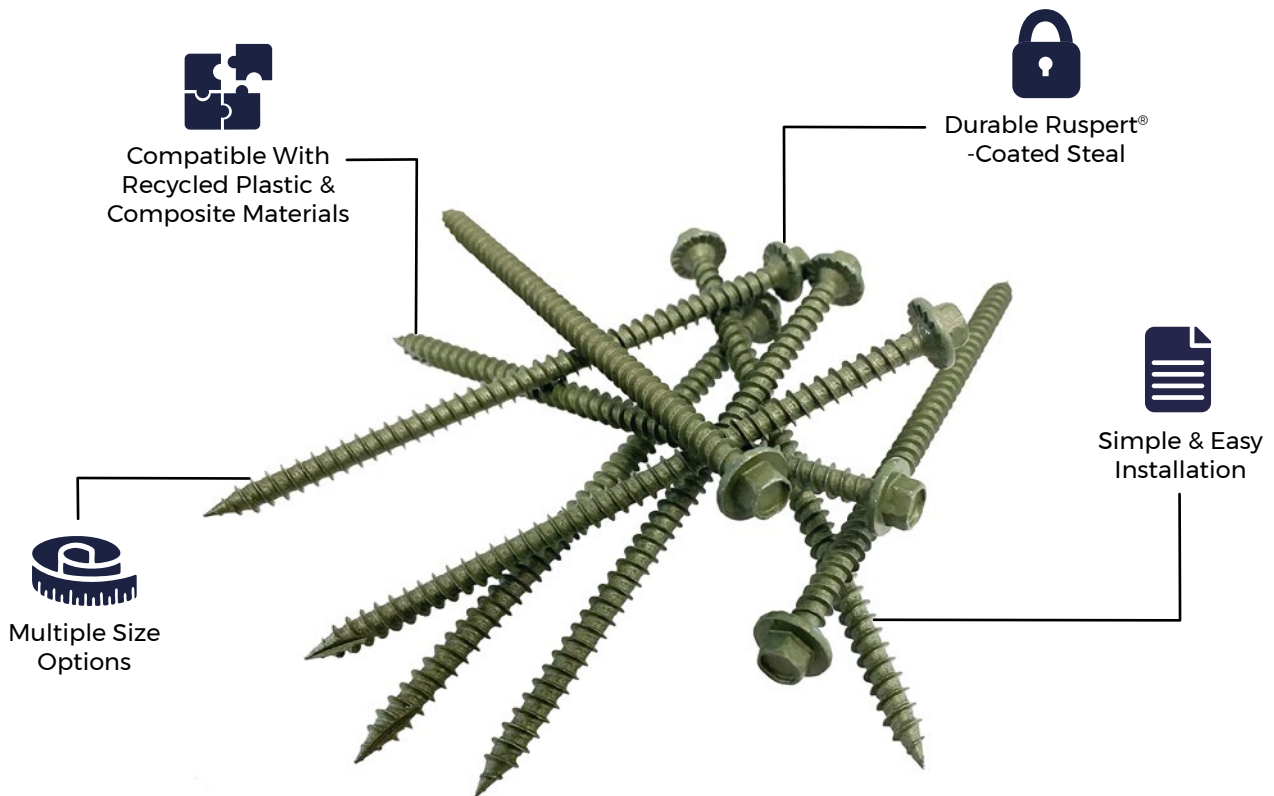


AVAILABLE IN TWO LENGTHS TO  
SUIT TO PROJECT REQUIREMENTS

## SCREW SPECIFICATIONS

SKU	FIXPVCSUBFRAME90 (90mm), FIXPVCSUBFRAME125 (125mm)
Length	90mm & 125mm
Head Type	Hexhead
Pack Size	50 Per Pack





#### MATERIALS

The hex head screws are made from Ruspert®-coated steel for maximum strength and durability, producing a strong decking foundation.



#### DURABILITY

These fully threaded screws are long-lasting and durable. The Ruspert®-coated steel provides corrosion resistance and will ensure that your decking subframe remains sturdy.



#### ACCESSORIES

These screws are versatile and are compatible with a variety of material subframes, such as composite and recycled plastic.



#### LOW MAINTENANCE

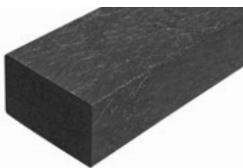
Once fixed, the screws will not need to be cleaned or maintained due to the Ruspert® steel material. This makes them ideal for subframe structures beneath decking.



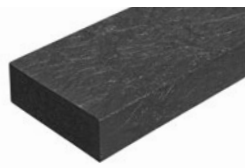
#### EASY TO USE

Using a suitable hex socket driver, choose 90mm screws for smaller or parallel joints where materials sit side by side. Choose 125 mm screws for noggins or perpendicular joints where extra reach is helpful.

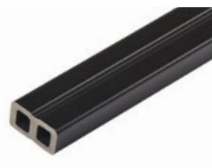
## PRODUCT ACCESSORIES



**RECYCLED PLASTIC  
JOIST 50MM X  
100MM X 3.6M**



**RECYCLED PLASTIC  
JOIST 50MM X  
150MM X 3M**



**COMPOSITE JOIST/  
BATTEN**



**STRUCTURAL  
COMPOSITE JOIST**



[www.cladco.co.uk](http://www.cladco.co.uk)

**T:** 01837 659901 **E:** [info@cladco.co.uk](mailto:info@cladco.co.uk)

**CLADCO**  
PROFILES