

HEX HEAD DECKING FRAME SCREWS

Ensure a reliable foundation for your decking project with our hex head decking frame screws. These screws are perfect for constructing sturdy subframes and are compatible with composite, timber and recycled plastic joists. They help to provide a long-lasting and stable base for your decking area.



**MANUFACTURED FROM
STRONG STAINLESS STEEL**



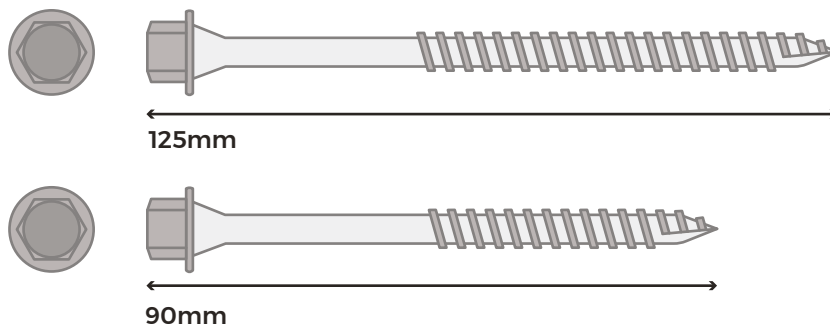
**IDEAL FOR SECURING CLADCO
RECYCLED PLASTIC JOISTS**

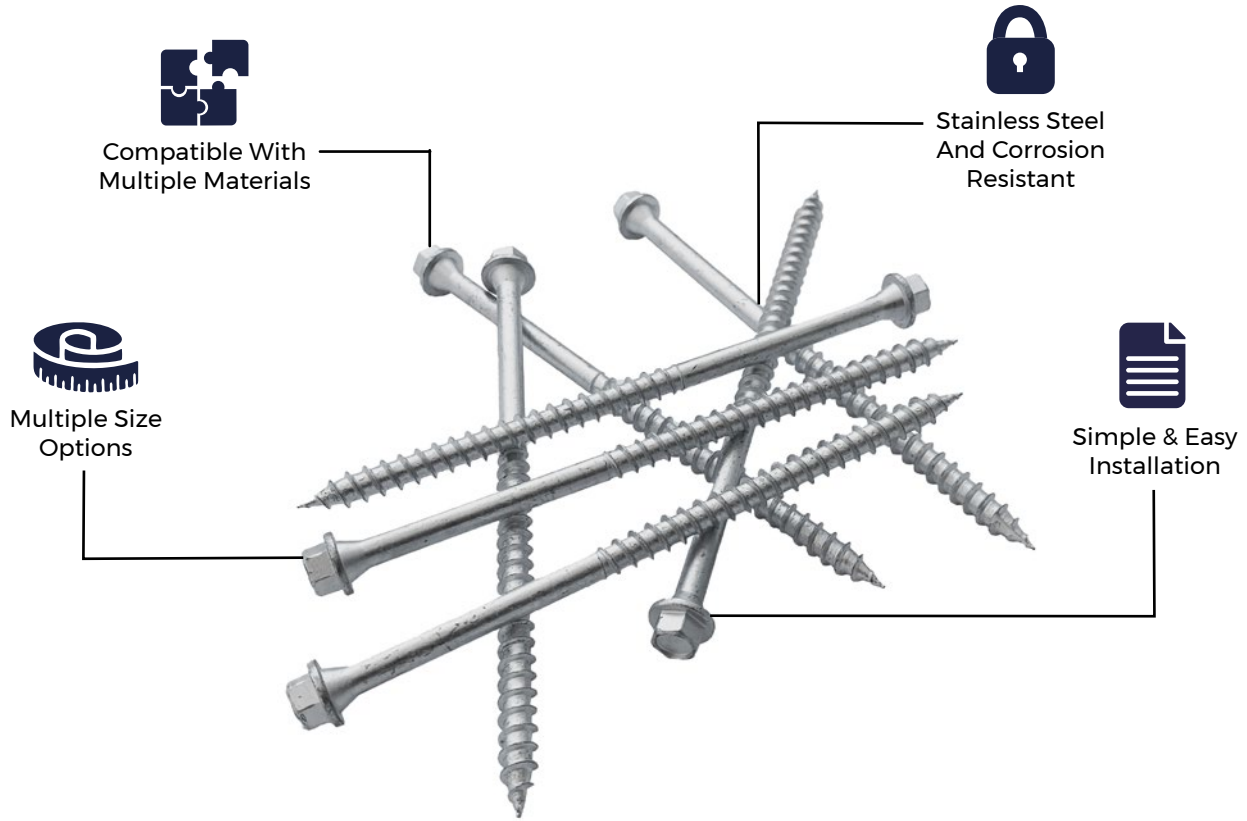


**AVAILABLE IN TWO LENGTHS TO
SUIT TO PROJECT REQUIREMENTS**

SCREW SPECIFICATIONS

SKU	FIXSUBFRAME90 (90mm) or FIXSUBFRAME125 (125mm)
Length	90mm or 125mm
Head Type	Hexhead
Pack Size	50 Per Pack





MATERIALS

The hex head screws are made from steel for maximum strength, producing a strong decking foundation.



DURABILITY

These screws are long-lasting and durable. The steel screws won't rot or decay over time and will ensure that your decking subframe remains sturdy.



ACCESSORIES

These screws are versatile and are compatible with a variety of material subframes, such as composite, timber and recycled plastic.



LOW MAINTENANCE

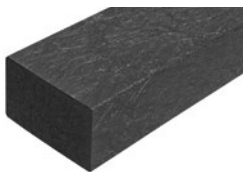
Once fixed, the screws will not need to be cleaned or maintained due to the steel material. This makes them ideal for subframe structures beneath decking.



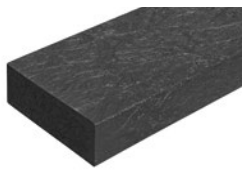
EASY TO USE

The hex head screws are simple to install and can be submerged in the structure using a flat drill bit, which is especially useful when installing fascia boards.

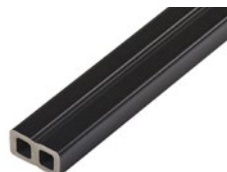
PRODUCT ACCESSORIES



RECYCLED PLASTIC JOIST 50MM X 100MM X 3.6M



RECYCLED PLASTIC JOIST 50MM X 150MM X 3M



COMPOSITE JOIST/ BATTEN



C24 SAWN GREEN TREATED TIMBER



www.cladco.co.uk
T: 01837 659901 E: info@cladco.co.uk

CLADCO
FILES