

3.6M WOODGRAIN CLADDING BOARD

FIBRE CEMENT CLICK RANGE



Cladco click fibre cement cladding boards deliver exceptional durability with minimal maintenance, making them the perfect choice for modern exterior applications. Our innovative click-together system provides superior weather protection whilst offering design flexibility through eight premium colours plus an unpainted option for custom finishes. Each 3.66m board is ideal for long-lasting performance, contemporary aesthetics, and hassle-free installation.

COLOUR RANGE

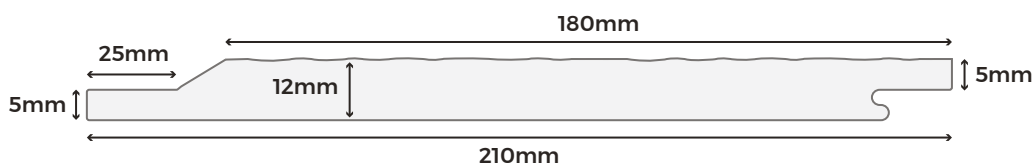


BOARD SPECIFICATIONS

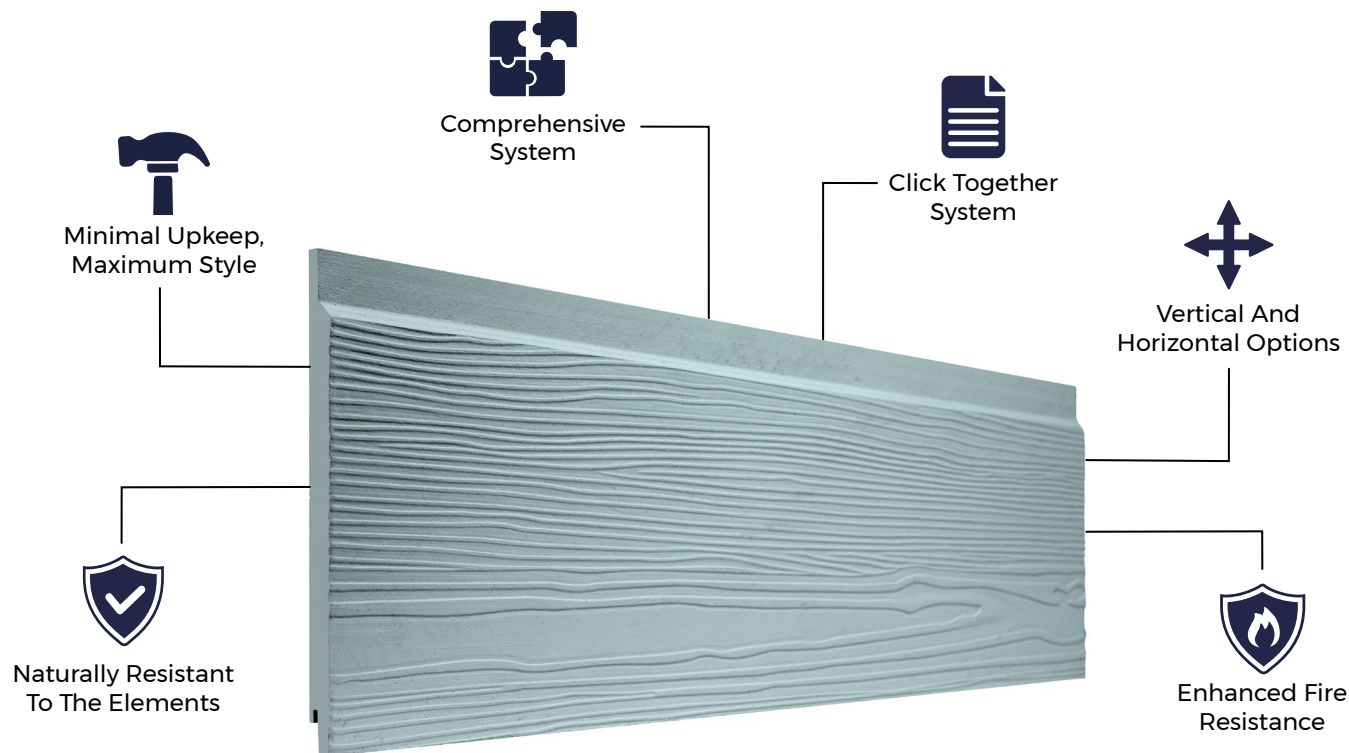
Length	3.66m
Width	210mm
Thickness	12mm
Coverage	0.69m ²
Weight	13.11kg

TEST CERTIFICATIONS

FSC® Certification	B - s1, d0 (EN 13501-1: 2018)
Fire Rating	Intertek A1
SKU	Black Blue Light Grey Cream Slate Granite White Sage Green Unpainted
	FCCWBL36 FCCWBG36 FCCWWG36 FCCWCW36 FCCWSG36 FCCWPE36 FCCWWH36 FCCWGG36 FCCWNP36



Please Note: Images are for illustration purposes only. Actual products may vary slightly from those shown.



 <p>MATERIALS</p> <p>Cellulose fibres and cement made with a blend of clay, iron and limestone.</p>	 <p>SURFACES</p> <p>Subtle embossed woodgrain effect or smooth surface design to transform any exterior.</p>	 <p>ACCESSORIES</p> <p>Complete your project with Cladco aluminium trims and colour-matched screws.</p>	 <p>LOW MAINTENANCE</p> <p>Click fibre cement boards are not prone to damage by mould, pests or rot.</p>	 <p>WARRANTY</p> <p>Cladco click fibre cement cladding boards come with a 10-year warranty.</p>
--	---	--	---	--

DIMENSIONALLY STABLE

The mix of materials used in the manufacturing of Cladco click fibre cement wall cladding produces a dimensionally-stable board. This results in little to no expansion of the boards when exposed to varying climates and temperatures.

EFFLORESCENCE

Efflorescence is a natural occurrence in fibre cement products when moisture is present on the boards. To minimise this, store boards indoors until installation and avoid installing them while wet, as this increases the likelihood of efflorescence.

Ensure proper airflow behind the boards and along the cladding perimeter to maintain adequate ventilation. Efflorescence deposits will naturally disappear over time as wind and rain dissolve them.

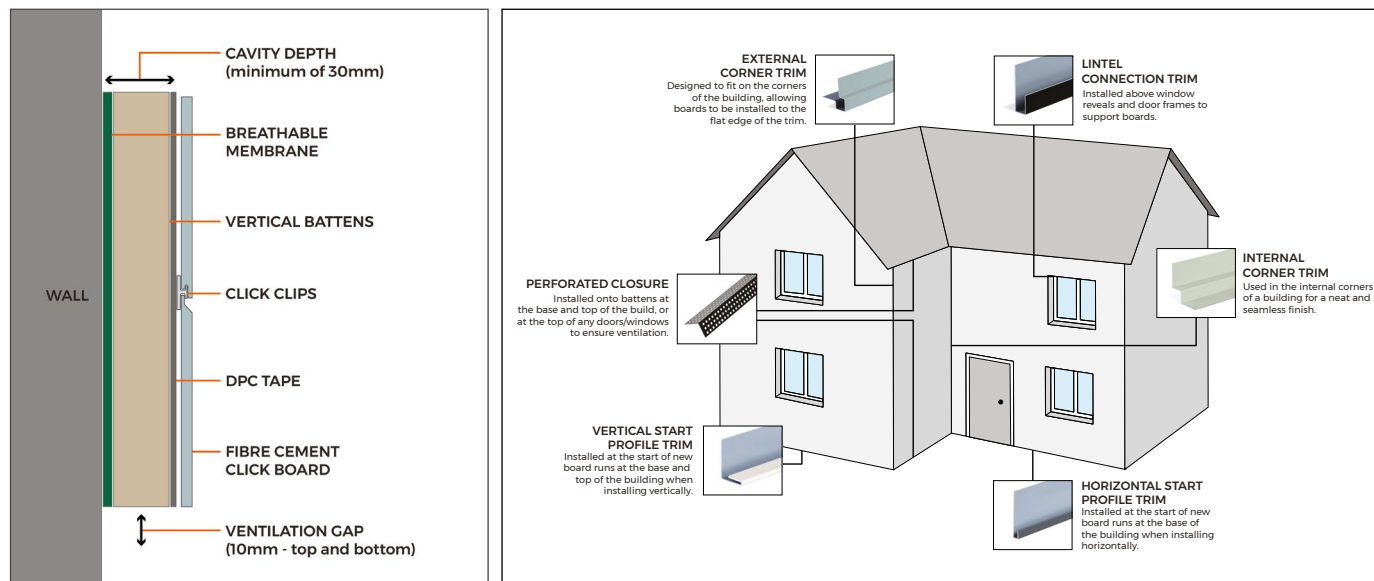
AFTERCARE

To maintain your fibre cement boards in pristine condition, clean periodically with lukewarm, soapy water using a soft cloth or brush. Always use gentle detergents; high-pressure cleaning systems are not recommended.

Cladco fibre cement touch-up paint can be used to conceal marks or scratches that may occur during installation or over time.

INSTALLATION ADVICE

When installing fibre cement Click cladding, a starter trim must be used at the base of the first row. For horizontal installations, the starter trim is fitted along the bottom edge of the wall. For vertical installations, the trim should run up the base edge where the first board begins. This ensures boards align correctly and remain securely fixed in place.



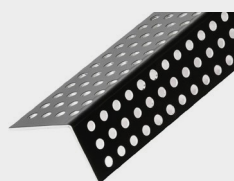
IMPORTANT NOTICE

When working with fibre cement materials, it is imperative that proper care is taken and necessary precautions are met. When fibre cement boards are cut, fine dust is released into the atmosphere.

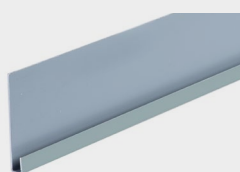
The mineral itself is harmless, however, is dangerous if inhaled and will constitute a health hazard. A level P3 respiratory protective mask should be worn when cutting the boards.

For detailed information about installation, please read our fibre cement lap installation guide.

PRODUCT ACCESSORIES



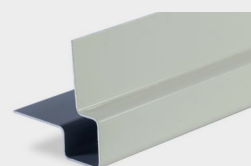
**PERFORATED
CLOSURE**



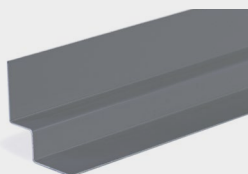
**HORIZONTAL
START TRIM**



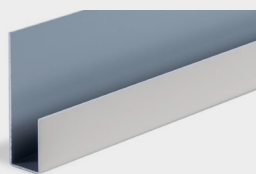
**VERTICAL
START TRIM**



**EXTERNAL
CORNER TRIM**



**INTERNAL
CORNER TRIM**



**LINTEL
TRIM**



**39MM FIBRE CEMENT
SCREWS**



FIXING KIT