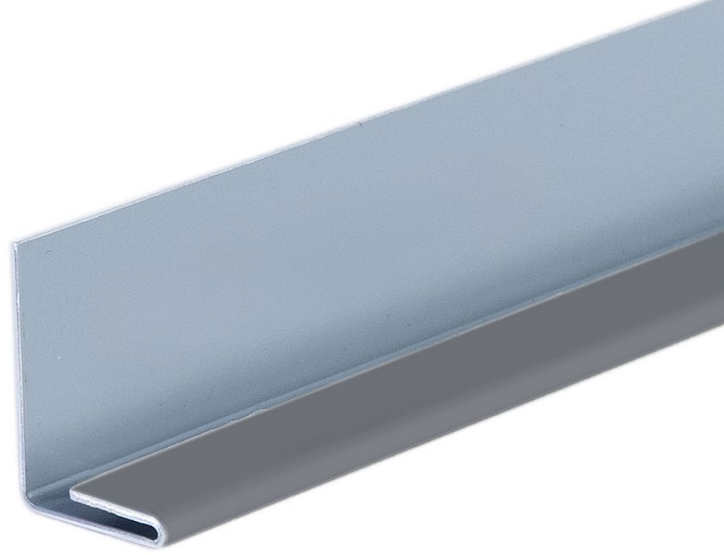


3M VERTICAL START TRIM

FIBRE CEMENT CLICK RANGE



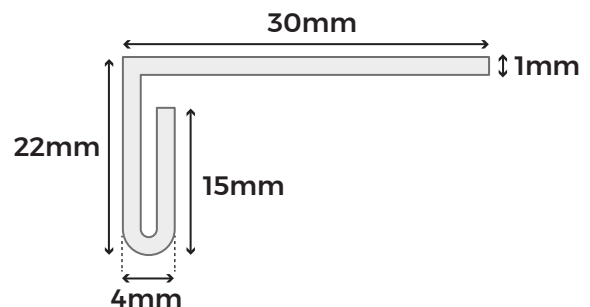
Made from high-quality coated aluminium, this starter trim helps to align fibre cement click cladding boards when installing vertically. This will create a solid foundation to further boards as well as create consistent spacing for the rest of the project. Colour-matched for your convenience, these trims will fit seamlessly with your cladding boards colours to produce a complete cladding system.

COLOUR RANGE

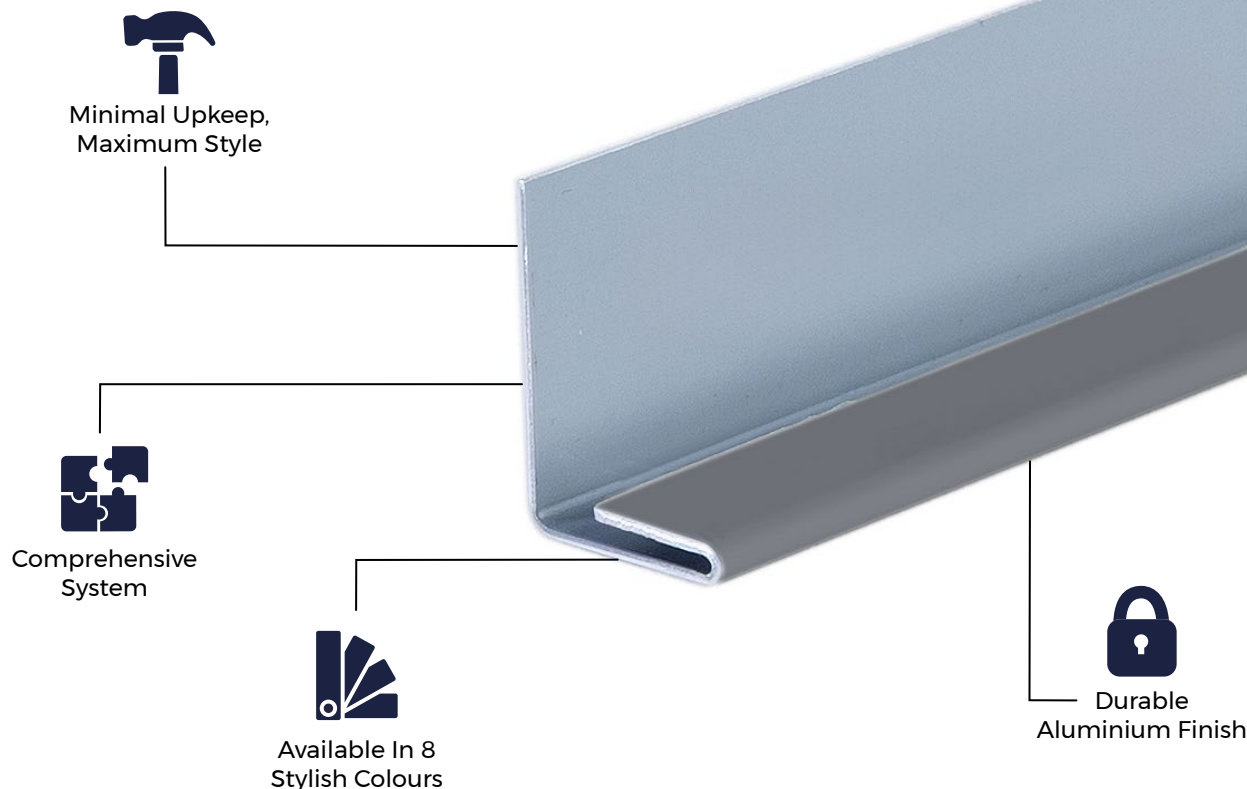


TRIM SPECIFICATIONS

SKU	(Black) FCTRIMCVSBL-P (Blue) FCTRIMCVSBG-P (Light Grey) FCTRIMCVSWG-P (Cream) FCTRIMCVSCW-P (Slate) FCTRIMCVSSG-P (Granite) FCTRIMCVSPE-P (White) FCTRIMCVSWH-P (Sage Green) FCTRIMCVSGG-P
Length	3m
Measurements	30mm x 22mm x 4mm x 15mm
Thickness	1mm
Weight	1.53kg



Please Note: Images are for illustration purposes only. Actual products may vary slightly from those shown.



MATERIALS

Cladco trims are manufactured onsite using high-quality aluminium, resulting in a stain-, rust-, and corrosion-resistant product.



SURFACES

The smooth, sleek surfaces provide a clean, modern finish that enhances the overall appearance of your installation.



ACCESSORIES

Complete your project with Cladco fibre cement click cladding boards, aluminium trims, and colour-matched screws for a seamless and professional finish.



LOW MAINTENANCE

The trim's flat aluminium surface is quick and easy to clean, helping maintain a neat, attractive finish alongside your fibre cement cladding boards.



INSTALLATION

The vertical start trim supports Cladco fibre cement click cladding in vertical installations, providing secure alignment, must be fitted every 3.6m.

EFFLORESCENCE IN FIBRE CEMENT

Efflorescence is a natural reaction in fibre cement products that can occur when moisture is present on the boards. To minimise this, we recommend storing boards indoors until they are ready for installation. Avoid installing boards while they are wet, as this increases the likelihood of efflorescence.

Ensure proper airflow behind the boards and along the perimeter of the cladding to allow sufficient ventilation. Please note that efflorescence deposits will eventually disappear as wind and rain naturally dissolve them.

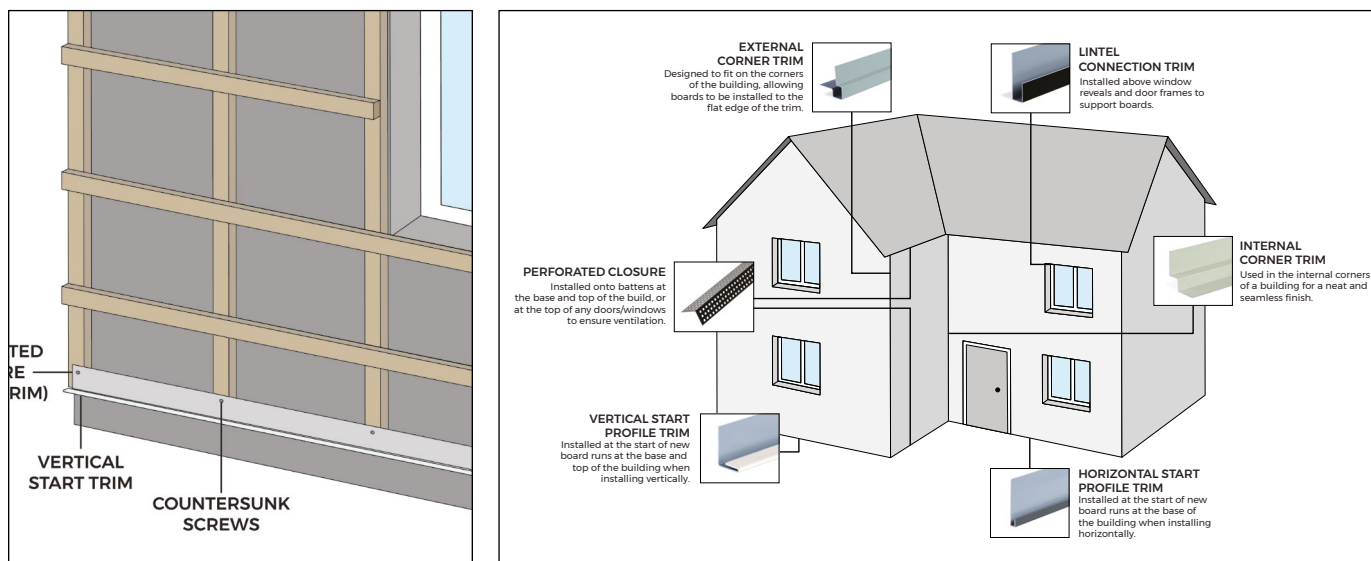
AFTERCARE

To keep your fibre cement boards and aluminium trims in pristine condition, clean them periodically using lukewarm, soapy water with a soft cloth or brush. Always use a gentle detergent, and do not use high-pressure cleaning systems.

For marks or scratches that may accumulate over time or during installation, Cladco fibre cement touch-up paint can be used to restore the surface and maintain a flawless finish.

INSTALLATION ADVICE

A vertical start trim is installed at the base of a wall to support Cladco fibre cement click wall cladding in vertical installations. It provides a secure seating point for the first board, keeps the system aligned, and must be repeated every 3.6m for each new run of boards.



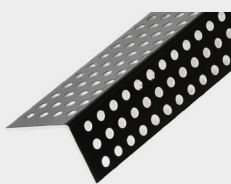
For detailed information about installation, please read our fibre cement lap installation guide.

IMPORTANT NOTICE

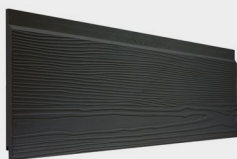
When working with fibre cement materials, it is essential to take proper care and follow necessary safety precautions. Cutting fibre cement boards releases fine dust into the air. While the mineral content itself is harmless, inhaling the dust can pose serious health risks.

To protect yourself, always wear a P3-rated respiratory protective mask when cutting fibre cement boards.

PRODUCT ACCESSORIES



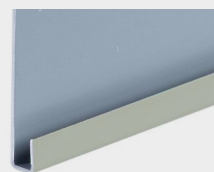
**PERFORATED
CLOSURE**



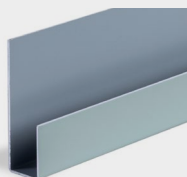
**FIBRE CEMENT CLICK
CLADDING BOARD**



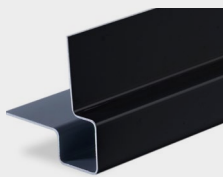
**INTERNAL
CORNER TRIM**



**HORIZONTAL
START TRIM**



**LINTEL
TRIM**



**EXTERNAL
CORNER TRIM**



**FIBRE CEMENT
SCREWS**



FIXINGS KIT