

3M LINTEL TRIM FIBRE CEMENT CLICK RANGE

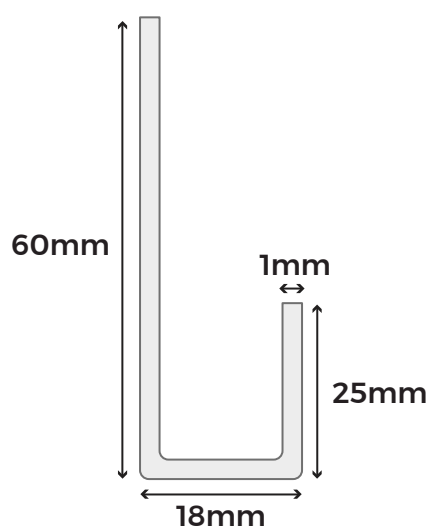
Create professional window and door reveals in your fibre cement click cladding installation with this essential lintel connection trim. This trim piece provides a clean, finished edge while securing board ends around window and door openings, to ensure structural integrity as well as completed lines.

COLOUR RANGE

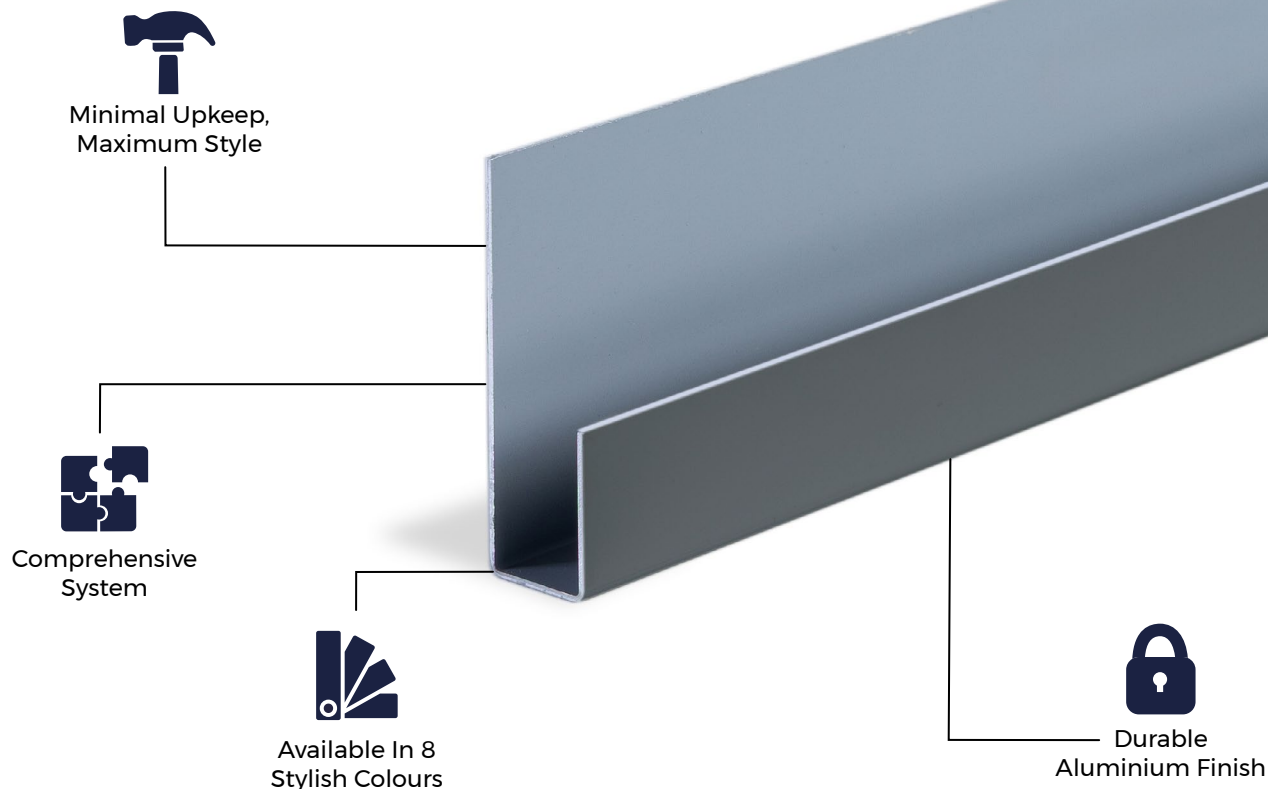


TRIM SPECIFICATIONS

SKU	(Black) FCTRIMCCLBL-P (Blue) FCTRIMCCLBG-P (Light Grey) FCTRIMCCLWG-P (Cream) FCTRIMCCLCW-P (Slate) FCTRIMDBSG-P (Granite) FCTRIMCCLPE-P (White) FCTRIMCCLWH-P (Sage Green) FCTRIMCCLGG-P
Length	3m
Measurements	60mm x 18mm x 25mm
Thickness	1mm
Weight	1.53kg (approx.)



Please Note: Images are for illustration purposes only. Actual products may vary slightly from those shown.



MATERIALS

Cladco trims are manufactured onsite using high-quality aluminium for a stain, rust and corrosion resistant product.



SURFACES

The aluminium surfaces are smooth and sleek, providing a refined, modern finish that enhances the overall aesthetic of your installation. This smooth finish also helps prevent dirt and grime buildup, making cleaning quick and easy.



ACCESSORIES

Complete your project with Cladco fibre cement click cladding boards, aluminium trims and colour-matched screws.



LOW MAINTENANCE

The trim's flat aluminium surface is quick and easy to clean, helping maintain a neat, attractive finish alongside your fibre cement cladding boards.



INSTALLATION

Use 3m lintel connection trims and 39mm screws to hold the edge of the cladding boards in place above windows and door frames.

EFFLORESCENCE IN FIBRE CEMENT

Efflorescence is a natural reaction in fibre cement products that can occur when moisture is present on the boards. To minimise this, we recommend storing boards indoors until they are ready for installation. Avoid installing boards while they are wet, as this increases the likelihood of efflorescence.

Ensure proper airflow behind the boards and along the perimeter of the cladding to allow sufficient ventilation. Please note that efflorescence deposits will eventually disappear as wind and rain naturally dissolve them.

AFTERCARE

To keep your fibre cement boards and aluminium trims in pristine condition, clean them periodically using lukewarm, soapy water with a soft cloth or brush. Always use a gentle detergent, and do not use high-pressure cleaning systems.

For marks or scratches that may accumulate over time or during installation, Cladco fibre cement touch-up paint can be used to restore the surface and maintain a flawless finish.



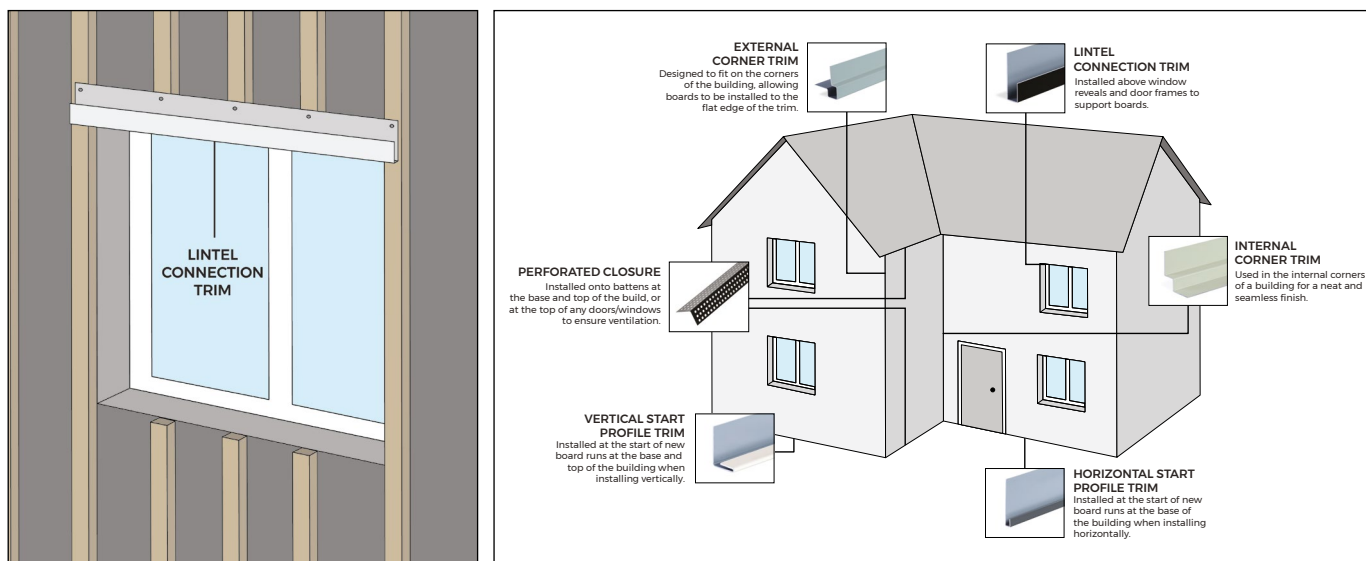
www.cladco.co.uk

T: 01837 659901 E: info@cladco.co.uk

CLADCO
PROFILES

INSTALLATION ADVICE

A lintel connection trim is fitted above windows and doors to create a clean, protective finish at the head of an opening. It is suitable for use with both full and cut boards and features drainage holes at the rear to prevent water pooling while allowing airflow through the system.



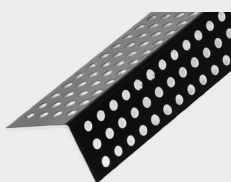
For detailed information about installation, please read our fibre cement lap installation guide.

IMPORTANT NOTICE

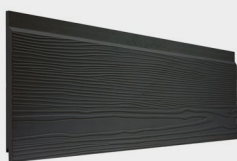
When working with fibre cement materials, it is essential to take proper care and follow necessary safety precautions. Cutting fibre cement boards releases fine dust into the air. While the mineral content itself is harmless, inhaling the dust can pose serious health risks.

To protect yourself, always wear a P3-rated respiratory protective mask when cutting fibre cement boards.

PRODUCT ACCESSORIES



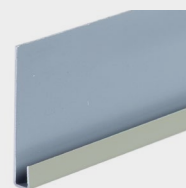
**PERFORATED
CLOSURE**



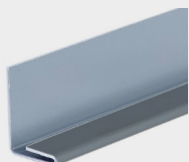
**FIBRE CEMENT CLICK
CLADDING BOARD**



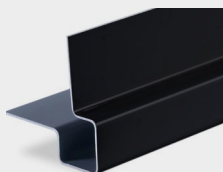
**INTERNAL
CORNER TRIM**



**HORIZONTAL
START TRIM**



**VERTICAL
START TRIM**



**EXTERNAL
CORNER TRIM**



**FIBRE CEMENT
SCREWS**



FIXINGS KIT