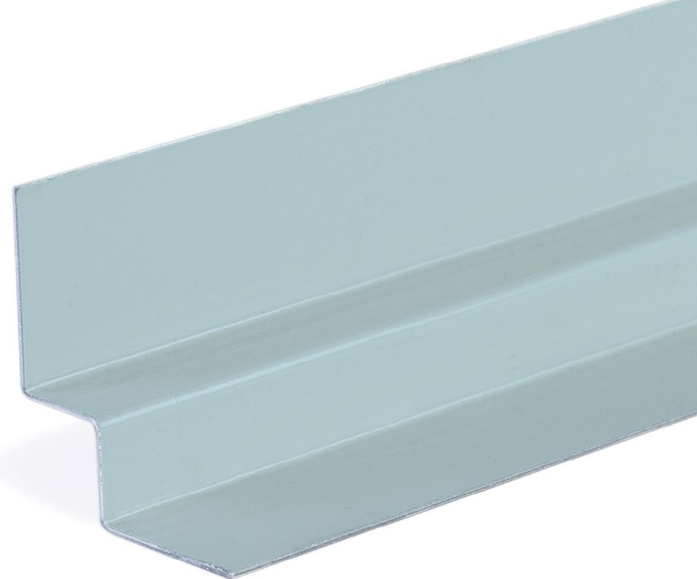


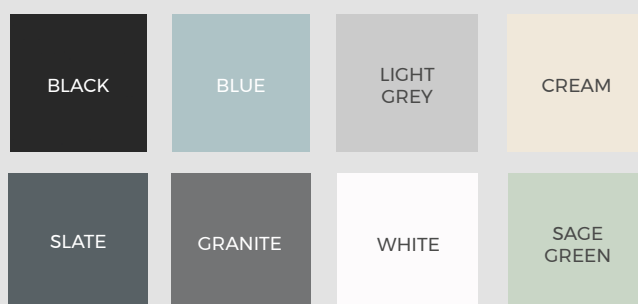
3M INTERNAL CORNER TRIM

FIBRE CEMENT CLICK RANGE



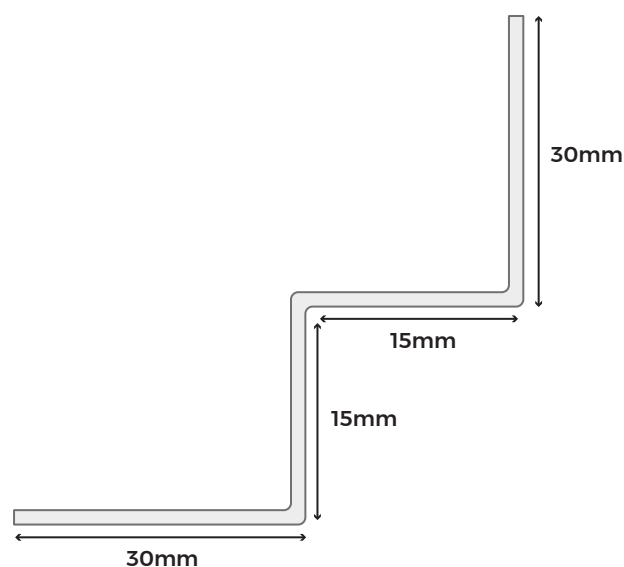
Our 3m internal corner trim ensures a precise finish for fibre cement click cladding installations. Fitted neatly into internal corners, it adds durability and clean lines to the system. Despite being an internal aspect of the fibre cement click construction, these high-quality aluminium trims are available in the same colour options as the boards, helping them blend seamlessly into the overall structure.

COLOUR RANGE

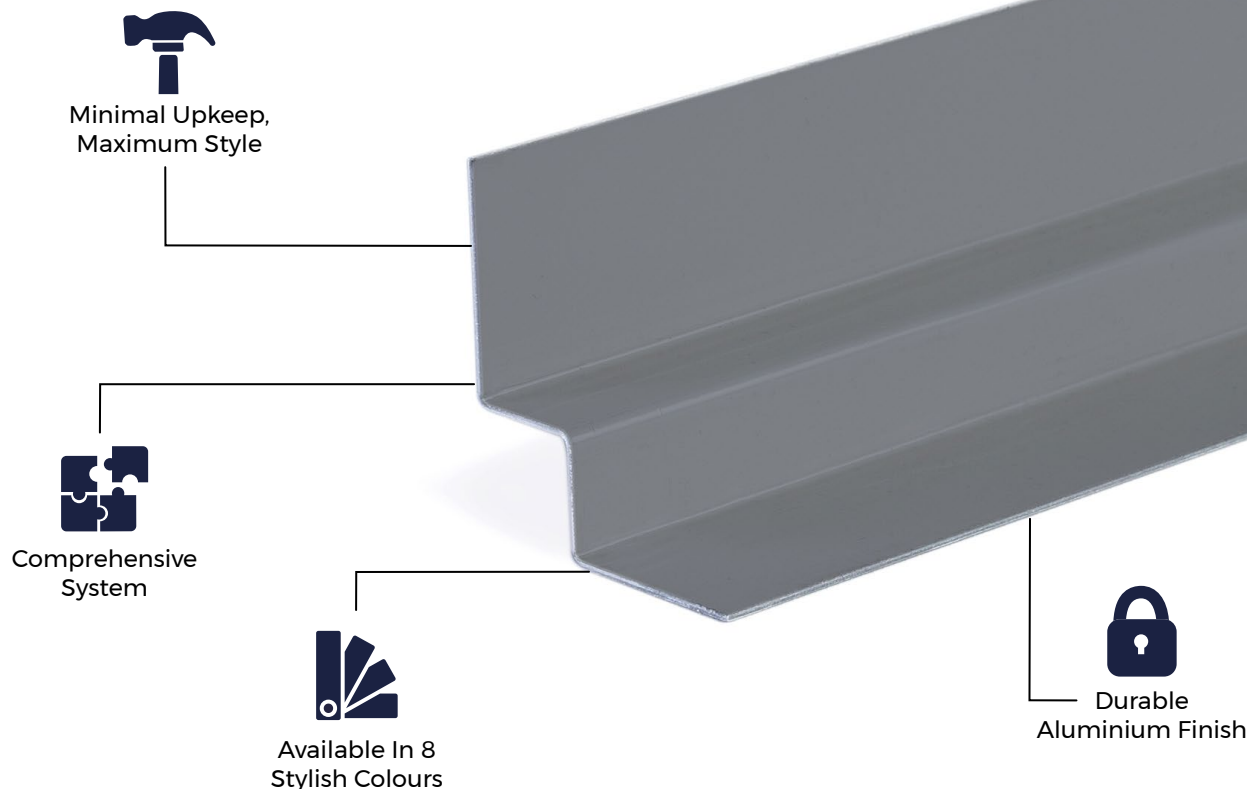


TRIM SPECIFICATIONS

SKU	(Black) FCTRIMCICBL-P (Blue) FCTRIMCICBG-P (Light Grey) FCTRIMCICWG-P (Cream) FCTRIMCICCW-P (Slate) FCTRIMCICSG-P (Granite) FCTRIMCICPE-P (White) FCTRIMCICWH-P (Sage Green) FCTRIMCICGG-P
Length	3m
Measurements	30mm x 15mm x 15mm x 30mm
Thickness	1mm
Weight	1.53kg



Please Note: Images are for illustration purposes only. Actual products may vary slightly from those shown.



MATERIALS

Cladco trims are manufactured onsite using high-quality aluminium, resulting in a stain-, rust-, and corrosion-resistant product.



SURFACES

The smooth, sleek surfaces provide a clean, modern finish that enhances the overall appearance of your installation.



ACCESSORIES

Complete your project with Cladco fibre cement click cladding boards, aluminium trims, and colour-matched screws for a seamless and professional finish.



LOW MAINTENANCE

The trim's flat aluminium surface is quick and easy to clean, helping maintain a neat, attractive finish alongside your fibre cement cladding boards.



INSTALLATION

Cladco aluminium internal corner trims are easily installed and slot into the corner with the two main sides of the trim resting against the adjoining walls.

EFFLORESCENCE IN FIBRE CEMENT

Efflorescence is a natural reaction in fibre cement products that can occur when moisture is present on the boards. To minimise this, we recommend storing boards indoors until they are ready for installation. Avoid installing boards while they are wet, as this increases the likelihood of efflorescence.

Ensure proper airflow behind the boards and along the perimeter of the cladding to allow sufficient ventilation. Please note that efflorescence deposits will eventually disappear as wind and rain naturally dissolve them.

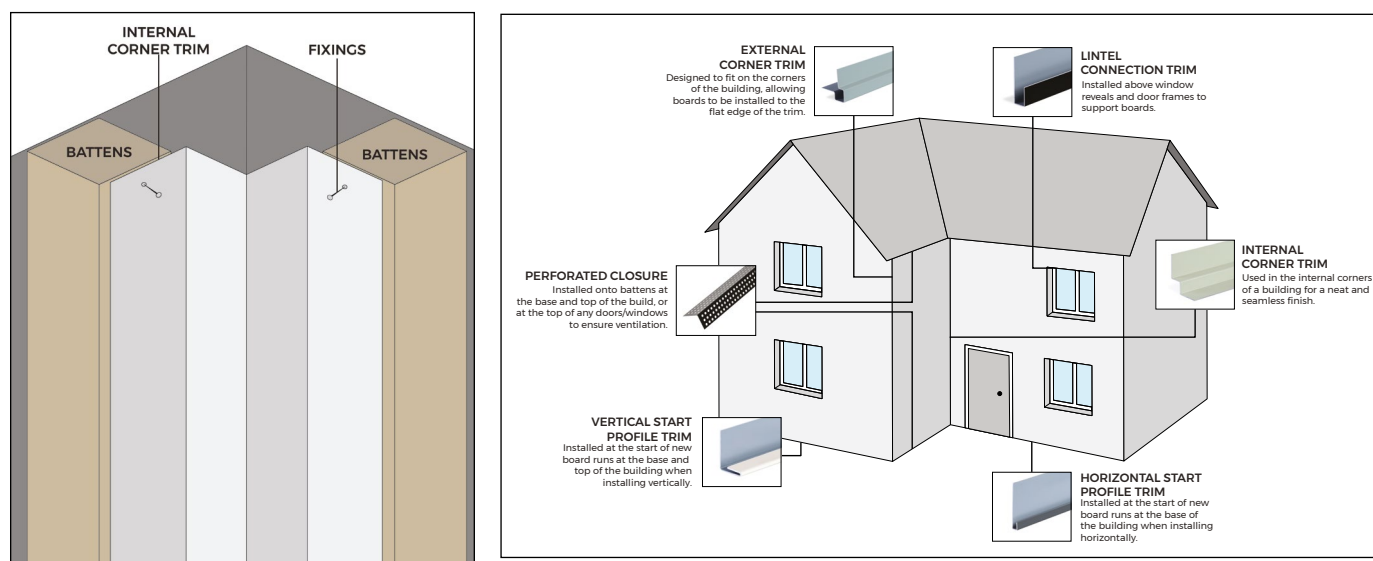
AFTERCARE

To keep your fibre cement boards and aluminium trims in pristine condition, clean them periodically using lukewarm, soapy water with a soft cloth or brush. Always use a gentle detergent, and do not use high-pressure cleaning systems.

For marks or scratches that may accumulate over time or during installation, Cladco fibre cement touch-up paint can be used to restore the surface and maintain a flawless finish.

INSTALLATION ADVICE

An internal corner trim is used at inside wall junctions to create a smooth, consistent edge detail. Installed vertically before boards are fitted, it allows boards to slot neatly into place while preserving ventilation and weather resistance at internal corners.



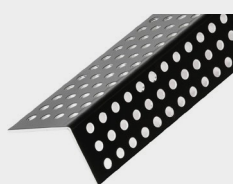
For detailed information about installation, please read our fibre cement lap installation guide.

IMPORTANT NOTICE

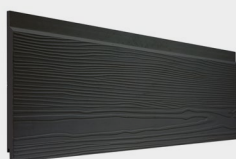
When working with fibre cement materials, it is essential to take proper care and follow necessary safety precautions. Cutting fibre cement boards releases fine dust into the air. While the mineral content itself is harmless, inhaling the dust can pose serious health risks.

To protect yourself, always wear a P3-rated respiratory protective mask when cutting fibre cement boards.

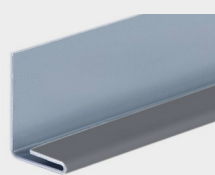
PRODUCT ACCESSORIES



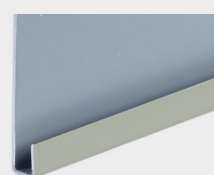
**PERFORATED
CLOSURE**



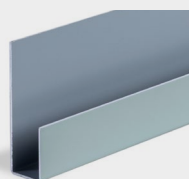
**FIBRE CEMENT CLICK
CLADDING BOARD**



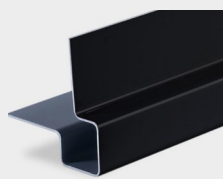
**VERTICAL
START TRIM**



**HORIZONTAL
START TRIM**



**LINTEL
TRIM**



**EXTERNAL
CORNER TRIM**



**FIBRE CEMENT
SCREWS**



FIXINGS KIT