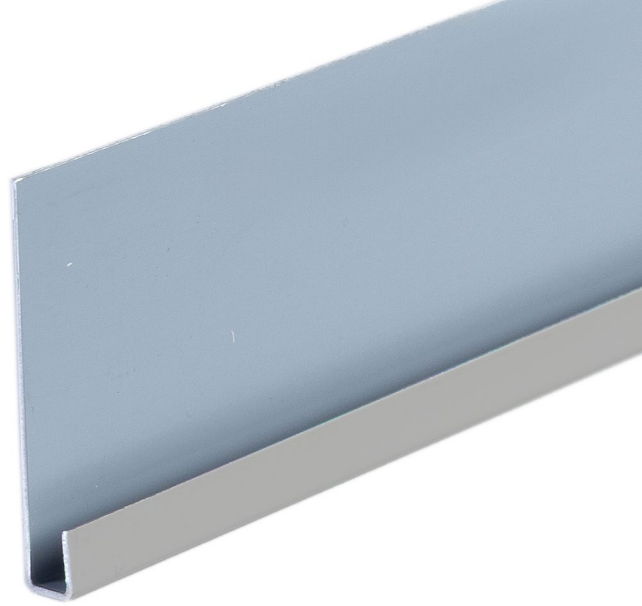


# 3M HORIZONTAL START TRIM

## FIBRE CEMENT CLICK RANGE



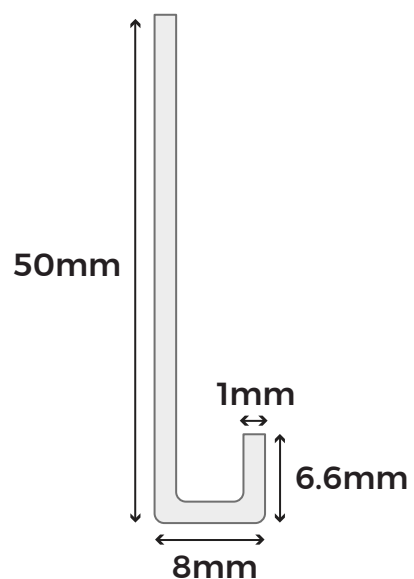
Give your horizontal fibre cement click cladding boards the perfect foundation with this starter trim. Designed to guide the positioning of your first board, this essential accessory ensures consistent alignment throughout your entire horizontal installation to deliver professional results from start to finish.

### COLOUR RANGE

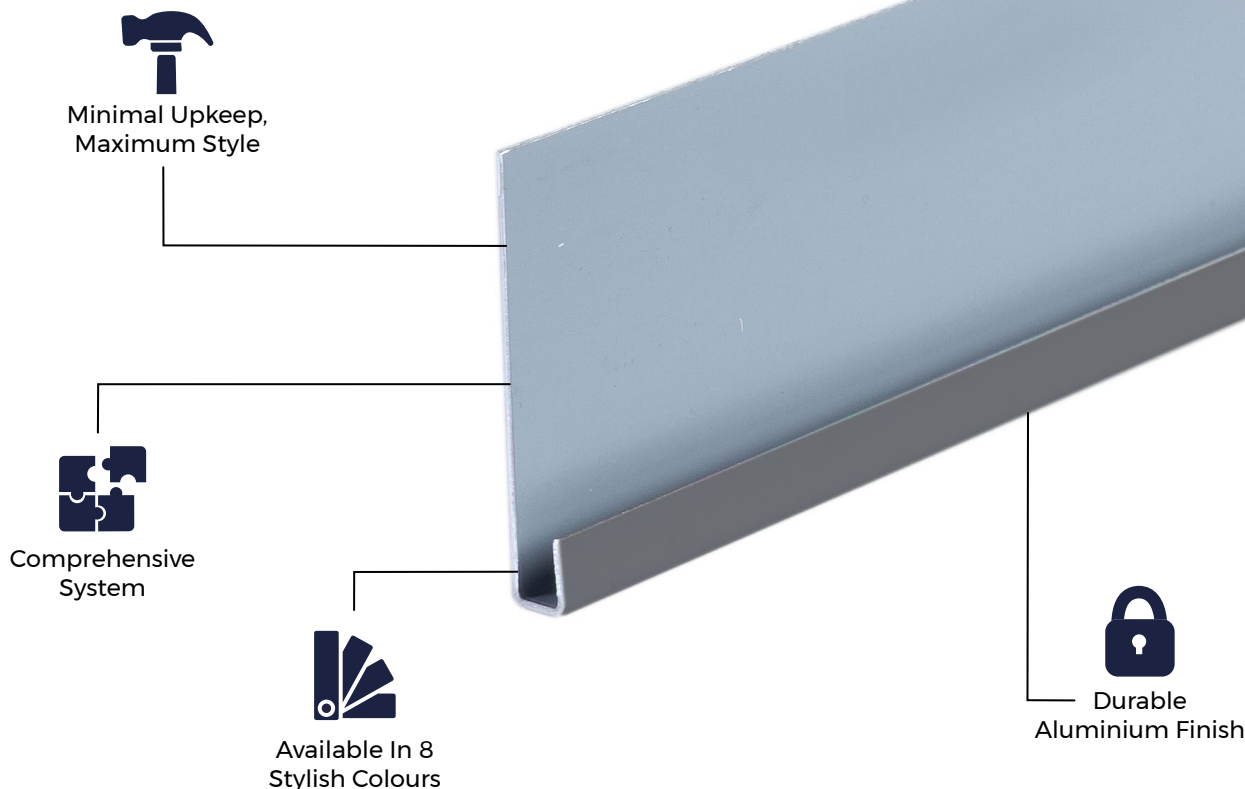


### TRIM SPECIFICATIONS

SKU	(Black) FCTRIMCHSBL-P (Blue) FCTRIMCHSBG-P (Light Grey) FCTRIMCHSWG-P (Cream) FCTRIMCHSCW-P (Slate) FCTRIMCHSSG-P (Granite) FCTRIMCHSPE-P (White) FCTRIMCHSWH-P (Sage Green) FCTRIMCHSGG-P
Length	3m
Measurements	50mm x 8mm x 6.6mm
Thickness	1mm
Weight	1.53kg



**Please Note:** Images are for illustration purposes only. Actual products may vary slightly from those shown.



#### MATERIALS

Cladco trims are manufactured onsite using high-quality aluminium, resulting in a stain-, rust-, and corrosion-resistant product.



#### SURFACES

The smooth, sleek surfaces provide a clean, modern finish that enhances the overall appearance of your installation.



#### ACCESSORIES

Complete your project with Cladco fibre cement click cladding boards, aluminium trims, and colour-matched screws for a seamless and professional finish.



#### LOW MAINTENANCE

The trim's flat aluminium surface is quick and easy to clean, helping maintain a neat, attractive finish alongside your fibre cement cladding boards.



#### INSTALLATION

The horizontal start trim forms the base for Cladco fibre cement click cladding, ensuring secure, level, and aligned installation. Secure with counter sunk screws.

## EFFLORESCENCE IN FIBRE CEMENT

Efflorescence is a natural reaction in fibre cement products that can occur when moisture is present on the boards. To minimise this, we recommend storing boards indoors until they are ready for installation. Avoid installing boards while they are wet, as this increases the likelihood of efflorescence.

Ensure proper airflow behind the boards and along the perimeter of the cladding to allow sufficient ventilation. Please note that efflorescence deposits will eventually disappear as wind and rain naturally dissolve them.

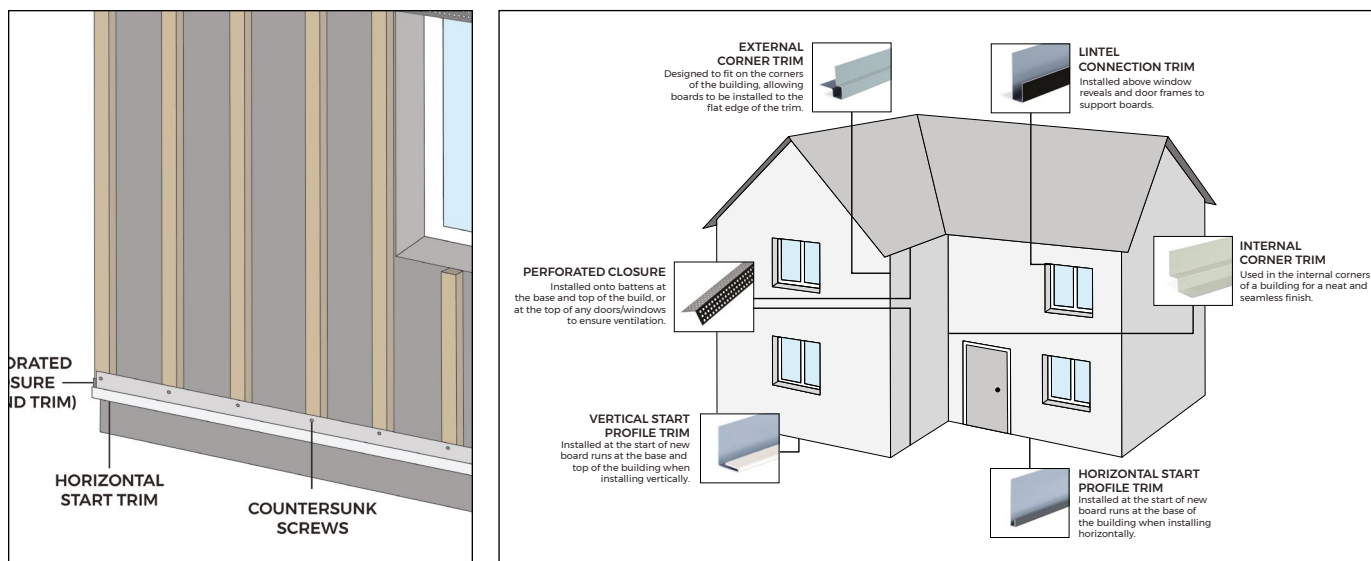
## AFTERCARE

To keep your fibre cement boards and aluminium trims in pristine condition, clean them periodically using lukewarm, soapy water with a soft cloth or brush. Always use a gentle detergent, and do not use high-pressure cleaning systems.

For marks or scratches that may accumulate over time or during installation, Cladco fibre cement touch-up paint can be used to restore the surface and maintain a flawless finish.

## INSTALLATION ADVICE

A horizontal start trim is the first component installed at the base of a wall when fitting Cladco fibre cement click wall cladding in horizontal installations. Fixed level across the façade, it provides a secure foundation for the first board, ensures correct alignment, and maintains spacing throughout the system.



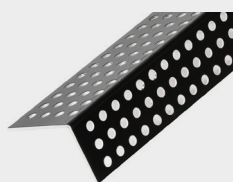
For detailed information about installation, please read our fibre cement lap installation guide.

## IMPORTANT NOTICE

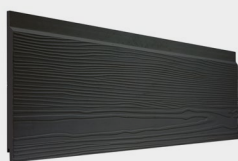
When working with fibre cement materials, it is essential to take proper care and follow necessary safety precautions. Cutting fibre cement boards releases fine dust into the air. While the mineral content itself is harmless, inhaling the dust can pose serious health risks.

To protect yourself, always wear a P3-rated respiratory protective mask when cutting fibre cement boards.

## PRODUCT ACCESSORIES



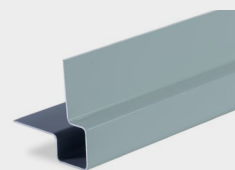
**PERFORATED CLOSURE**



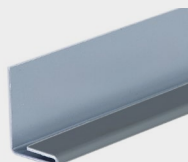
**FIBRE CEMENT CLICK CLADDING BOARD**



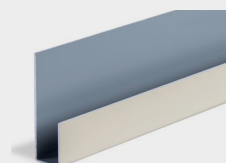
**INTERNAL CORNER TRIM**



**EXTERNAL CORNER TRIM**



**VERTICAL START TRIM**



**WINDOW LINTEL**



**FIBRE CEMENT SCREWS**



**FIXINGS KIT**