

# 3M EXTERNAL CORNER TRIM

## FIBRE CEMENT CLICK RANGE



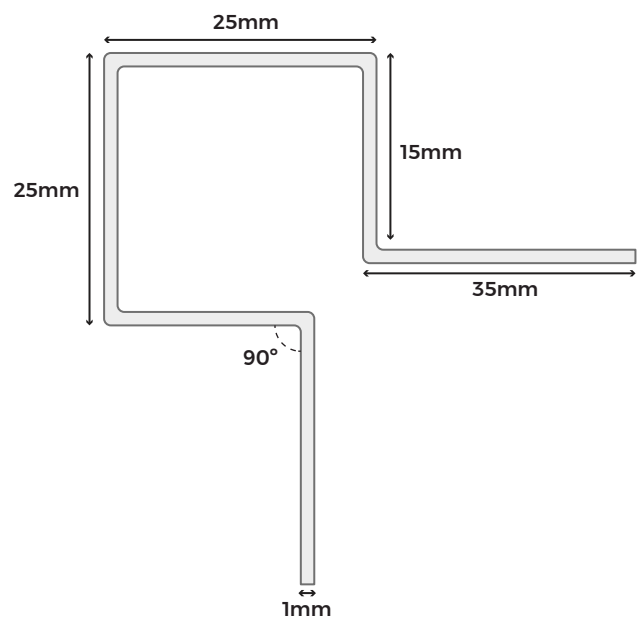
These external corner trims provide the perfect finishing touch, securing fibre cement click board edges while delivering the professional aesthetic you're looking for. As well as protecting the borders from potential wear and tear or damage, these aluminium trims are available in the same colour range as the cladding boards. Choose the colour to fit seamlessly with the original boards for minimal visibility once installed.

### COLOUR RANGE

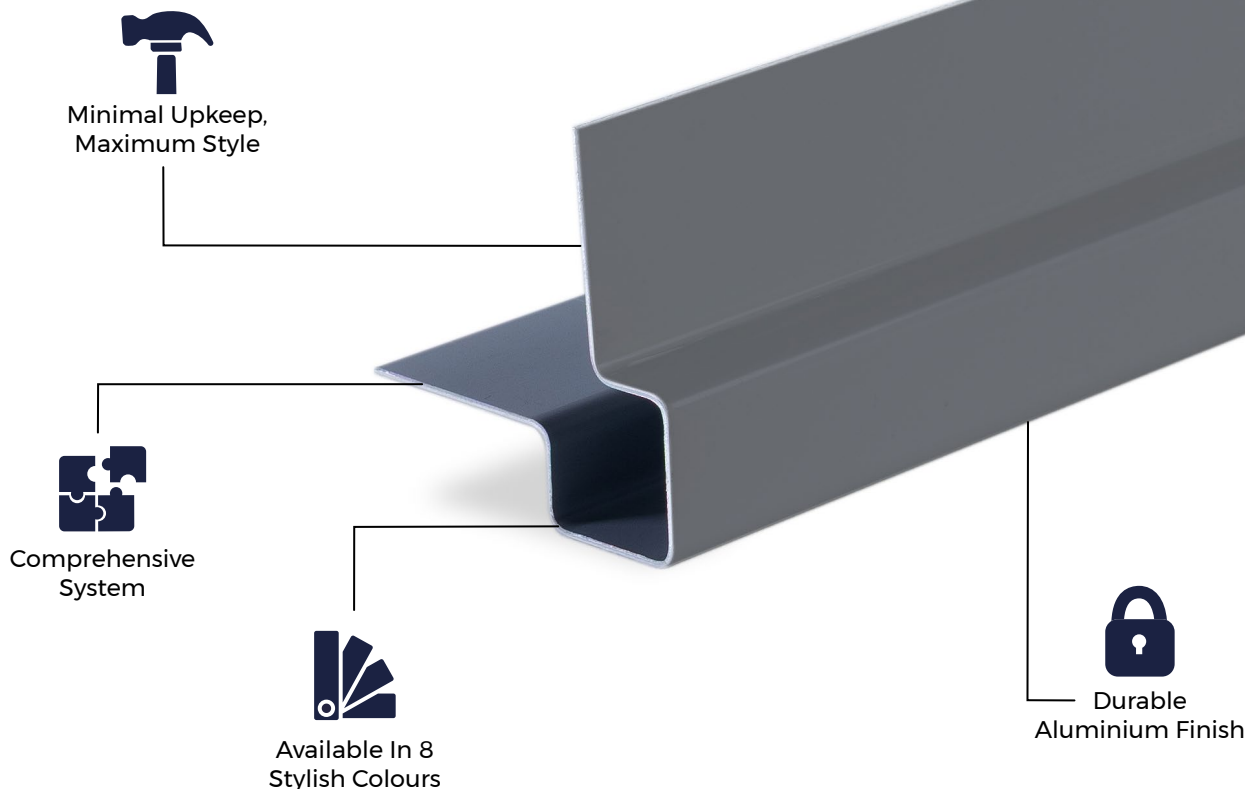


### TRIM SPECIFICATIONS

SKU	(Black) FCTRIMCECBL-P (Blue) FCTRIMCECBG-P (Light Grey) FCTRIMCECWG-P (Cream) FCTRIMCECCW-P (Slate) FFCTRIMCECSG-P (Granite) FCTRIMCECPE-P (White) FCTRIMCECWH-P (Sage Green) FCTRIMCECGG-P
Length	3m
Measurements	35mm x 15mm x 25mm x 25mm x 15mm x 35mm
Thickness	1mm
Weight	1.53kg



**Please Note:** Images are for illustration purposes only. Actual products may vary slightly from those shown.



#### MATERIALS

Cladco trims are manufactured onsite using high-quality aluminium, resulting in a stain-, rust-, and corrosion-resistant product.



#### SURFACES

The smooth, sleek surfaces provide a clean, modern finish that enhances the overall appearance of your installation.



#### ACCESSORIES

Complete your project with Cladco fibre cement click cladding boards, aluminium trims, and colour-matched screws for a seamless and professional finish.



#### LOW MAINTENANCE

The trim's flat aluminium surface is quick and easy to clean, helping maintain a neat, attractive finish alongside your fibre cement cladding boards.



#### INSTALLATION

Mount the trim to the underlying batten framework on both sides of corner intersections using appropriate screws. Subsequently, attach panels to the profiles using fasteners.

## EFFLORESCENCE IN FIBRE CEMENT

Efflorescence is a natural reaction in fibre cement products that can occur when moisture is present on the boards. To minimise this, we recommend storing boards indoors until they are ready for installation. Avoid installing boards while they are wet, as this increases the likelihood of efflorescence.

Ensure proper airflow behind the boards and along the perimeter of the cladding to allow sufficient ventilation. Please note that efflorescence deposits will eventually disappear as wind and rain naturally dissolve them.

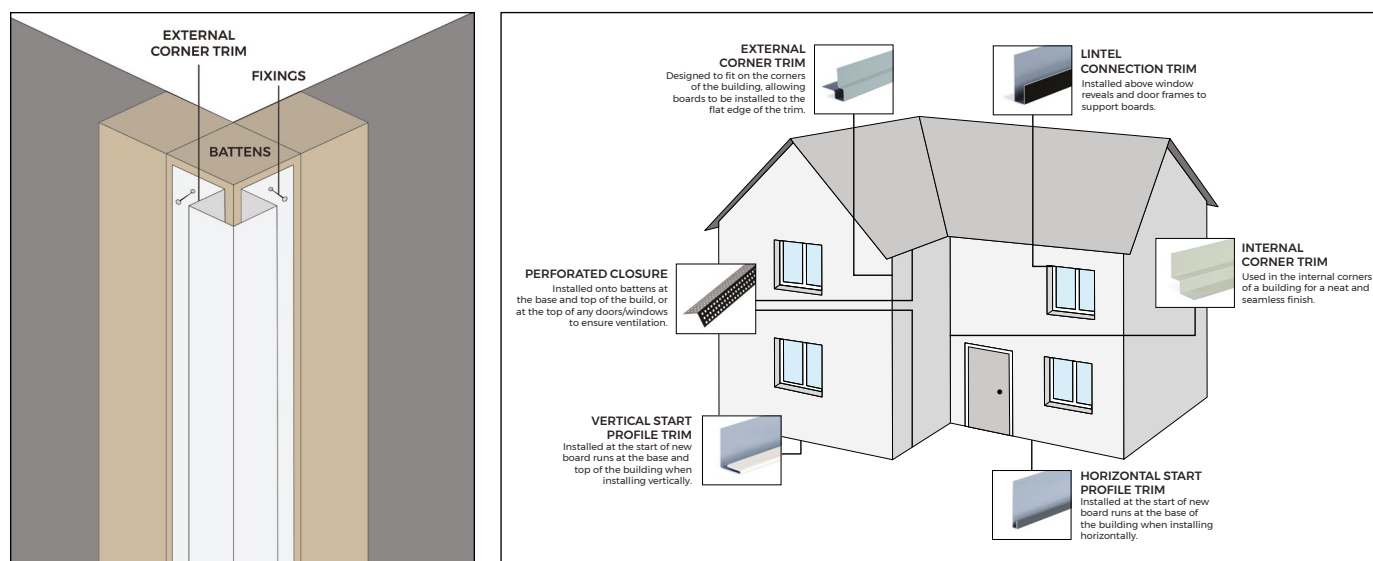
## AFTERCARE

To keep your fibre cement boards and aluminium trims in pristine condition, clean them periodically using lukewarm, soapy water with a soft cloth or brush. Always use a gentle detergent, and do not use high-pressure cleaning systems.

For marks or scratches that may accumulate over time or during installation, Cladco fibre cement touch-up paint can be used to restore the surface and maintain a flawless finish.

## INSTALLATION ADVICE

An external corner trim provides a neat, durable finish for outside corners when installing Cladco fibre cement click wall cladding. Installed vertically before the boards, it creates a defined edge detail, allowing boards to slot securely into place while maintaining alignment, weather protection, and a professional appearance at external junctions.



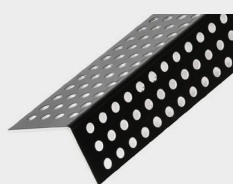
For detailed information about installation, please read our fibre cement lap installation guide.

## IMPORTANT NOTICE

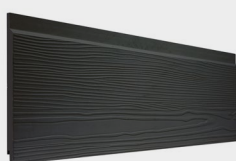
When working with fibre cement materials, it is essential to take proper care and follow necessary safety precautions. Cutting fibre cement boards releases fine dust into the air. While the mineral content itself is harmless, inhaling the dust can pose serious health risks.

To protect yourself, always wear a P3-rated respiratory protective mask when cutting fibre cement boards.

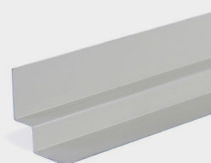
## PRODUCT ACCESSORIES



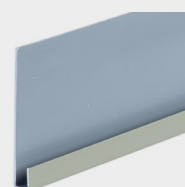
**PERFORATED  
CLOSURE**



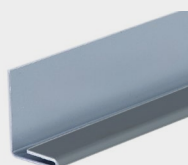
**FIBRE CEMENT CLICK  
CLADDING BOARD**



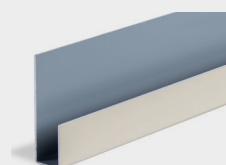
**INTERNAL  
CORNER TRIM**



**HORIZONTAL  
START TRIM**



**VERTICAL  
START TRIM**



**WINDOW  
LINTEL**



**FIBRE CEMENT  
SCREWS**



**FIXINGS KIT**