



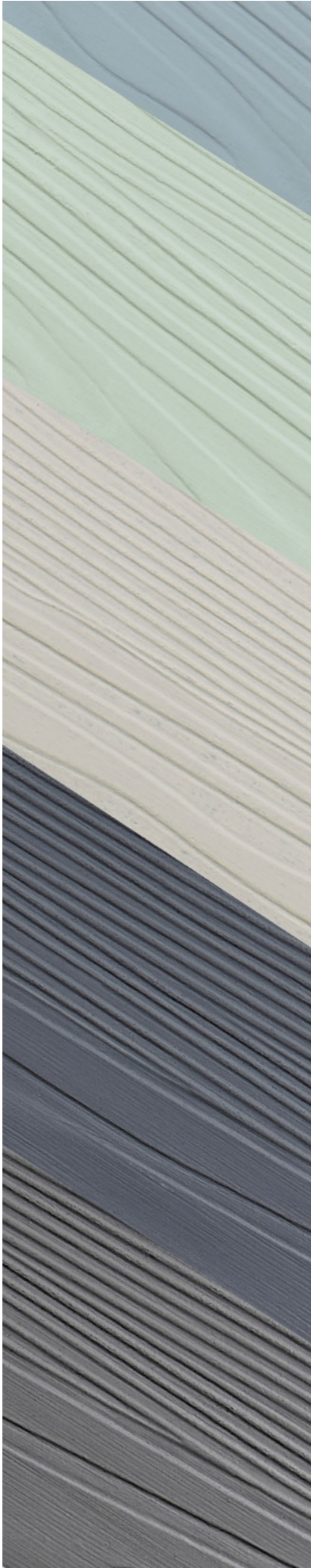
Pictured - Granite fibre cement click cladding

# CLADCO FIBRE CEMENT CLICK WALL CLADDING AND TRIMS

Installation Guide,  
Aftercare and FAQs

**CLADCO**  
PROFILES





## CONTENTS

|                                  |    |
|----------------------------------|----|
| Fibre Cement Lap vs Click        | 3  |
| Storage & Warranty               | 4  |
| Tools & Equipment                | 5  |
| Do's & Don'ts                    | 6  |
| Preparing The Wall               | 7  |
| Horizontal Installation          | 8  |
| Vertical Installation            | 9  |
| Final Board Installation         | 10 |
| Finishing Around Windows & Doors | 11 |
| Fibre Cement Click Trims         | 12 |
| Aftercare & Maintenance          | 14 |
| FAQs                             | 15 |

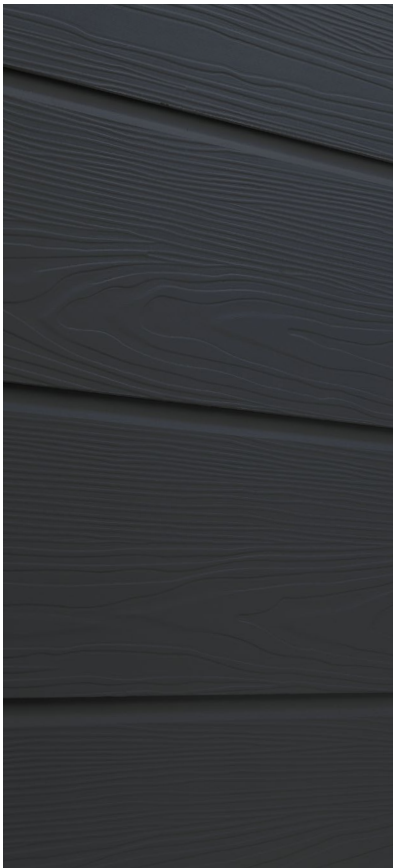


## CLADCO FIBRE CEMENT LAP BOARDS

For a timeless, traditional look, Cladco fibre cement lap wall cladding is designed to replicate the classic charm of timber featherboard cladding. Installed in a horizontal lap style, the boards create a layered effect that is ideally suited to residential properties seeking a heritage-inspired finish.

Manufactured for durability and easy to install, Cladco lap cladding boards carry a B fire rating, offering robust protection while maintaining a lightweight, easy-to-handle construction. The boards are also resistant to rot, pests and harsh weather, requiring minimal upkeep compared to natural wood.

With a subtle woodgrain texture and a wide choice of colours to choose from, Cladco lap cladding provides an authentic, natural timber appearance together with long-lasting performance, ensuring buildings retain their traditional appeal for years to come.

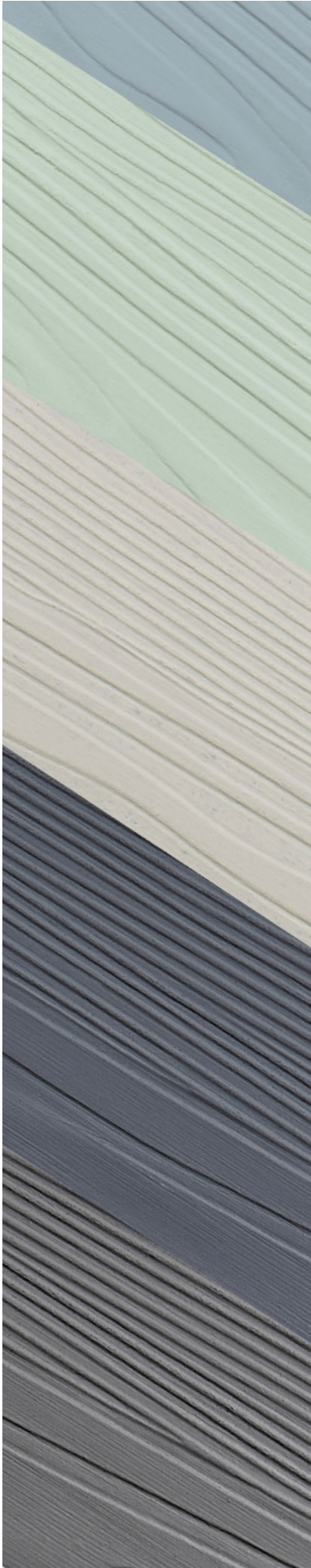


## CLADCO FIBRE CEMENT CLICK BOARDS

Cladco fibre cement click wall cladding offers a sleek, modern aesthetic with a precision tongue-and-groove design that creates clean, crisp lines across building façades. Designed for versatility, the boards can be installed either horizontally or vertically, making them suitable for a wide range of property styles, from residential homes to commercial projects.

Engineered for strength and weather resistance, Cladco click cladding carries an A1 fire rating, ensuring outstanding safety and long-term performance. The boards replicate the natural texture and variation of timber while requiring minimal maintenance, delivering the character of wood without the associated disadvantages.

Available in a wide selection of colours, as well as an unpainted option for those who prefer to apply their own finish, Cladco click cladding is a durable, lightweight solution that combines architectural appeal with straightforward installation, giving buildings a refined and enduring exterior.



Cladco fibre cement click wall cladding boards have been designed to last and are engineered with increased durability.

Each board is designed to replicate the natural variations of traditional timber cladding. Colours may differ slightly between batches, so to maintain consistency, it is recommended to purchase all boards required for your project at the same time, which also helps reduce delivery costs.

It is recommended to lay out all Cladco fibre cement click wall cladding boards before installation, to ensure the natural effect of grain, colour, and tone is balanced across your entire cladding project.



## STORAGE AND HANDLING

Cladco fibre cement click wall cladding boards should always be stored in a cool, dry, shaded spot, on a flat level surface with the entire board supported. Ensure boards are protected from the weather, dust, water and debris. It is recommend to store the boards indoors.

Installing Cladco fibre cement click boards while wet increases the likelihood of efflorescence and butt ends shrinking. We recommend installing Boards in dry conditions only. Cladco fibre cement click wall cladding boards should always be moved and carried by two physically abled people, edge to edge, to prevent the boards from bending, cracking or splitting. Take care when handling and moving the fibre cement click boards, and avoid bending or arching movements, as this can cause them to break.



## WARRANTY

Cladco fibre cement click wall cladding boards are supplied with a 10-year warranty subject to terms and conditions. Cladco fibre cement click wall cladding boards should be installed as per this installation guide. Failure to do so may invalidate the warranty. For further information, visit [www.cladco.co.uk/cladcoprofiles-limited-conditions-sale](http://www.cladco.co.uk/cladcoprofiles-limited-conditions-sale).

# TOOLS & EQUIPMENT

---



## Protective Equipment

When handling or carrying Cladco fibre cement click wall cladding boards, always wear long sleeves and gloves to protect exposed skin. Cutting fibre cement produces fine dust that is harmful if inhaled, so a P3-rated respiratory mask must be worn when cutting. Safety glasses and ear defenders are also recommended. Aluminium trims have sharp edges and should be handled with Cut Level 5 protective gloves to prevent injury.



## Tool Set

Standard DIY or carpentry tools such as a tape measure, spirit level, pencil and utility knife are suitable for installing Cladco fibre cement click wall cladding boards.



## Cutting Tools

Wet, low-speed, and low-dust cutting tools are recommended for cutting Cladco fibre cement click wall cladding boards. A wet circular saw fitted with a diamond-tipped blade or a blade designed for fibre cement is ideal, although a carbide-tooth blade can also be used if necessary. Aluminium trims and perforated closures can be cut to size using Cladco straight-cut



## Staple Gun

Use a staple gun to secure damp-proof course material to the battens before installing Cladco fibre cement click wall cladding boards.



## Health and Safety

When working with fibre cement materials, it is essential to take proper care and follow safety precautions. Cutting fibre cement click boards releases fine dust that can be harmful if inhaled. Always cut boards outdoors or in a well-ventilated area and wear a P3-rated respiratory mask to protect yourself from dust exposure.



# DO'S & DON'TS

---



Do not install Cladco fibre cement click wall cladding if the boards, building, or surrounding areas are wet.



Do not dry sweep dust or debris from the boards, as this may release particles into the air. Instead, wipe surfaces with a damp cloth.



Nail guns can be used to fix the boards.



Do not cut Cladco fibre cement click wall cladding boards indoors.



Always follow the manufacturer's safety recommendations when using saws or other cutting equipment.



Always carry boards upright with the assistance of another person to prevent damage or injury.

# PREPARING THE WALL

## Breathable Membrane

If using a breathable membrane, it should always be positioned behind the battens before installation begins. Vertical battens must be securely fixed to the wall at intervals of no more than 600mm (centre-to-centre). In areas exposed to higher wind loads, reduce spacing to provide extra support.

## Battens

For standard installation, use battens measuring 75mm x 38mm. At external corners and joints, larger battens of 100mm x 38mm are required for added strength and stability.

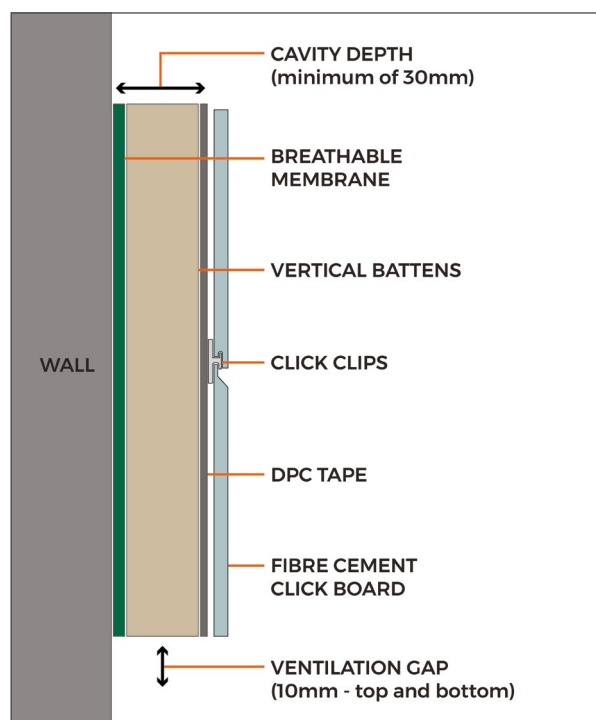
## Damp Proof Course

Before fixing any trims or cladding boards, apply DPC tape to each batten. This provides extra weather protection, helps prevent efflorescence on the cladding surface, and extends the life of the battens. Be sure not to let the tape extend beyond the edges of the battens, as leaving a small gap before each edge ensures a clear airflow path behind the cladding.

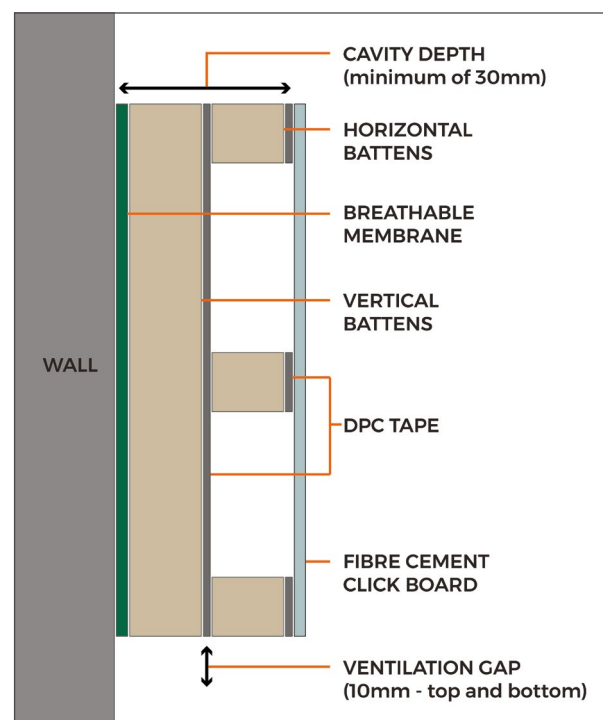
## Ventilation Gap

Before installing Cladco fibre cement click wall cladding, ensure there is a minimum 30mm clear cavity behind the boards, with a continuous 10mm ventilation gap at both the top and bottom of the façade. This airflow must also be maintained above and below window openings and above external doors.

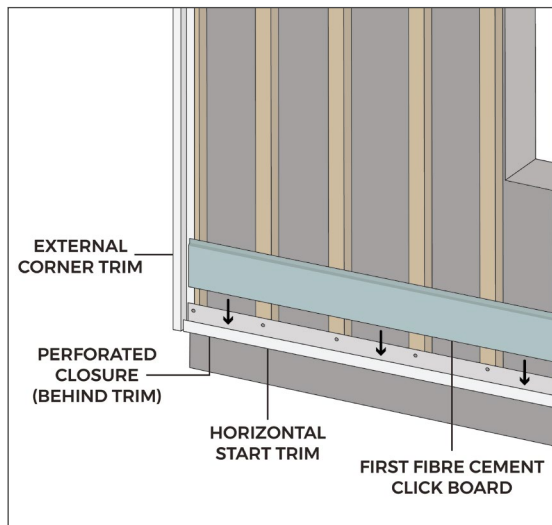
## HORIZONTAL INSTALLATION



## VERTICAL INSTALLATION

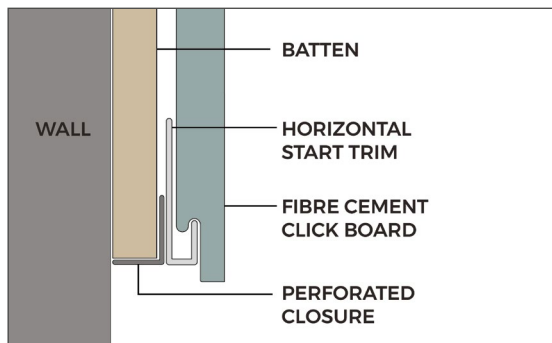


# HORIZONTAL INSTALLATION

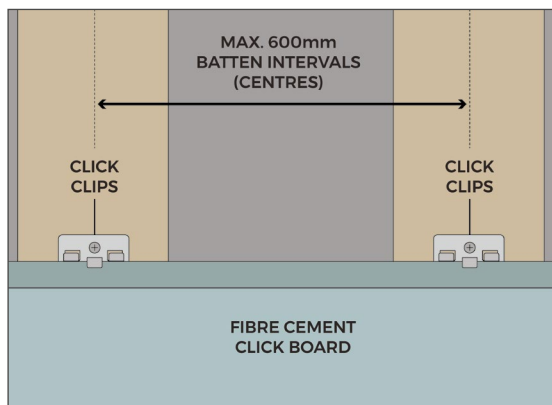


**1** Begin by fixing perforated closures to the battens at both the top and bottom of the façade. These closures prevent insects and pests from entering the space behind the cladding boards while still allowing essential airflow for ventilation.

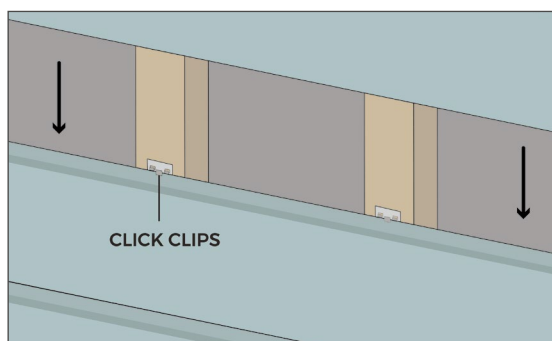
**2** At the base of the wall, install the Cladco click horizontal starter trim directly over the perforated closure using countersunk screws, making sure the screw heads sit flush so they don't obstruct the placement of the first board. This trim provides a solid foundation for the first board and ensures consistent spacing and alignment across the project.



**3** Position the first Cladco fibre cement click board so the lower edge locks neatly into the starter profile and the ends slot securely into any pre-fitted corner trims. Check the board is level along its entire length, as this first course will set the alignment for all subsequent rows.



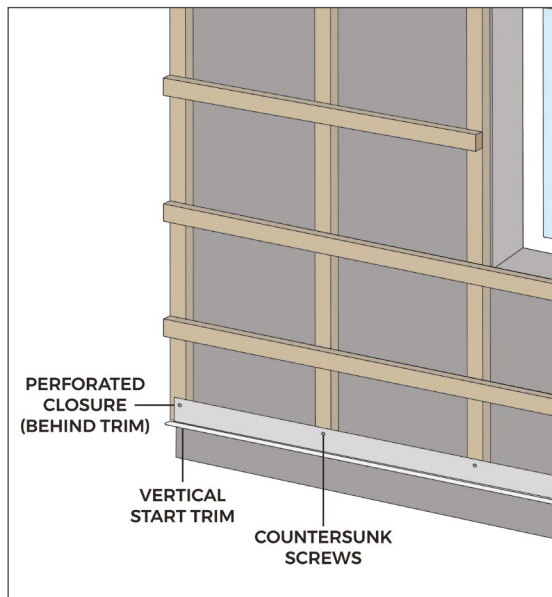
**4** Secure the board by fixing click clips along its top edge at every supporting batten. Use corrosion-resistant screws or nails, ensuring the board is held firmly but not overtightened. This fixing method allows natural expansion and contraction while maintaining a secure installation.



**5** Install each subsequent board by slotting it onto the board below and fixing it in the same way, continuing up the wall until the façade is complete.

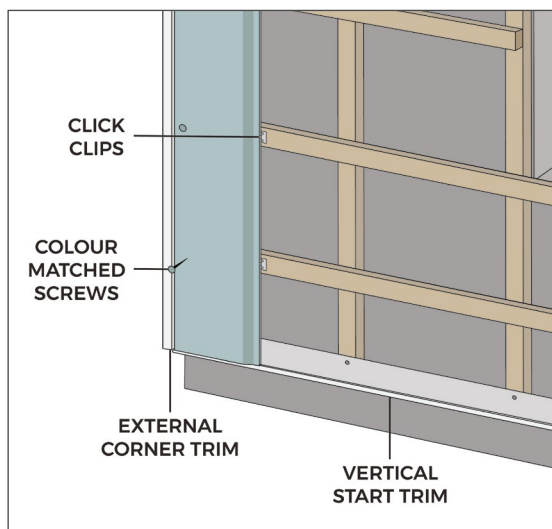


# VERTICAL INSTALLATION



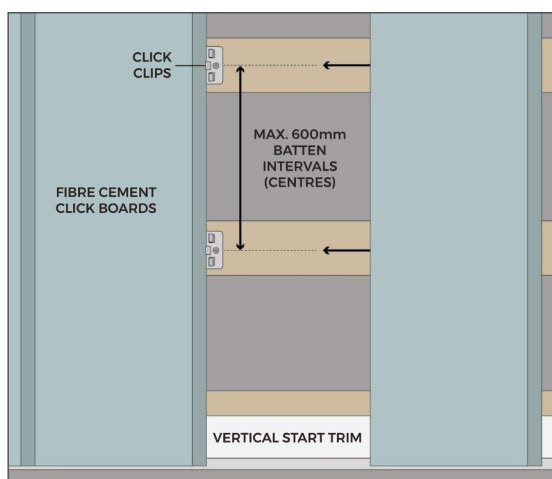
**1** Horizontal counter battens should be installed over the vertical frame to support the boards and maintain ventilation. Start by fixing perforated closures to the battens at both the top and bottom edges of the façade. These closures help prevent insects and debris from getting behind the cladding while still allowing the necessary airflow for ventilation. Make sure they are installed continuously along the width of the wall.

**2** Begin installation at the base of the external wall with the Cladco vertical start profile. This profile provides a solid foundation for the first board and must be fixed level to ensure accurate alignment. Vertical start profiles must be installed at intervals of no more than 3.6m for each new run of boards.



**3** Before fitting any boards, install all necessary trims, such as internal or external corner trims, so that the boards can slot neatly into place. Trim back the lowest batten if required to allow the start profile to sit correctly.

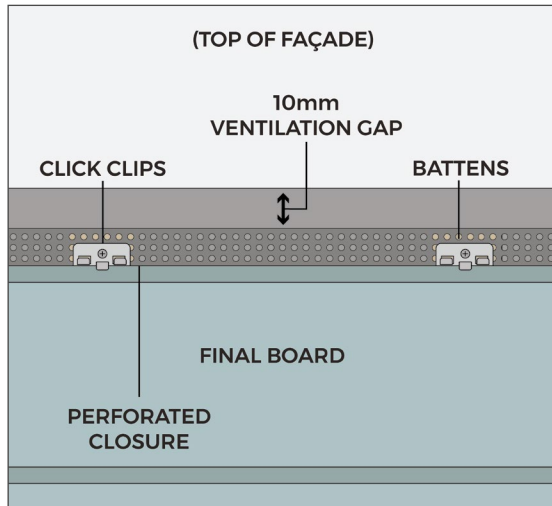
**4** Position the first Cladco fibre cement click wall cladding board into the vertical start profile. Secure one edge of the board with countersunk screws placed 20mm from the edge, fixing directly through the face. On the opposite edge, use click clips at every supporting batten. This allows natural expansion and contraction while keeping the board firmly in place.



**5** Slot the next board into the clips already fixed, resting it on the start profile. Attach additional clips along the new board, securing it to every supporting batten. Repeat this process with each subsequent board until the façade is complete.

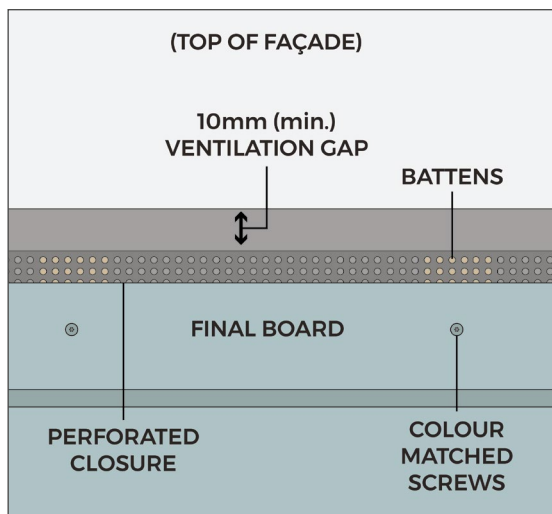
# FINAL BOARD INSTALLATION

At the top of the façade, the final Cladco fibre cement click wall cladding board can be secured in one of two ways:



## Using A Full Board

If the final row uses a full board, fix it in place with standard click clips along each supporting batten, over the perforated closure, following the same method as previous courses.

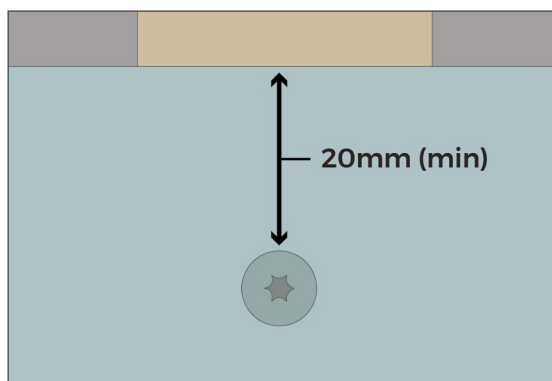


## Using A Cut Board

If a cut board is required for the final row, secure it using corrosion-resistant, colour-matched mushroom head screws.

Always pre-drill screw holes 20-25mm from the board edge to prevent damage and ensure accuracy. Screws should be driven perpendicular to the board surface using an electric drill and a high-quality bit suited to the screw head.

Leave a 3-5mm expansion gap between the board ends and trims. Sand or seal cut board edges to maintain durability and protect against moisture ingress.



### Top Tip:

Dry-fit the final row before fixing to ensure an even finish and avoid narrow board cuts.

# FINISHING AROUND WINDOWS AND DOORS

## WINDOWS AND DOORS

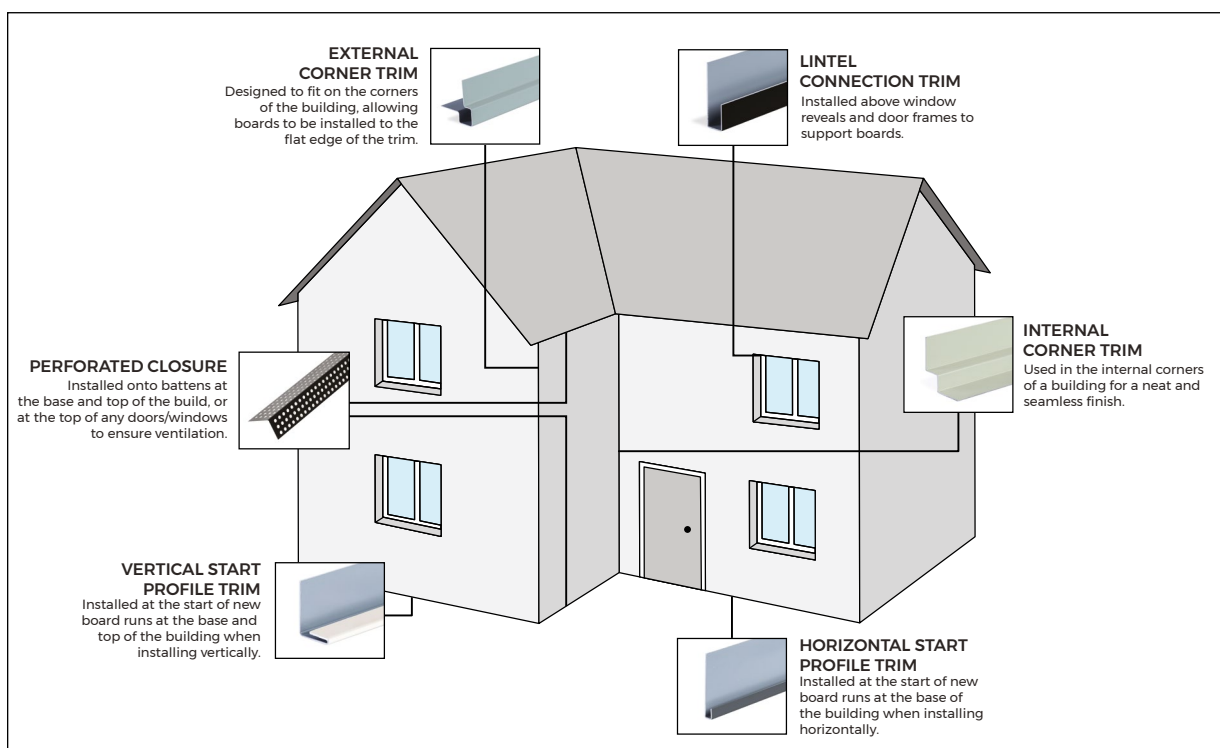
Openings such as windows and doors must be carefully detailed to maintain ventilation, prevent water ingress, and create a clean, professional finish. Use Cladco external corner trims to finish the vertical reveals on either side of a window or door, and install a lintel connection trim above the opening. Lintel trims are designed with drainage holes at the rear to direct water away from the façade and can be used with both full and cut boards.

Where required, add a breather membrane and flashing tape around openings to further protect against moisture ingress.

Perforated closures should be fitted at the heads and sills of all windows and doors, as well as at the top and bottom of the façade. These closures prevent birds, rodents, and insects from entering the cavity while allowing ventilation. Maintain a continuous 10mm ventilation gap above and below each opening, leaving at least 25mm of perforated closure open to ensure airflow is not obstructed.

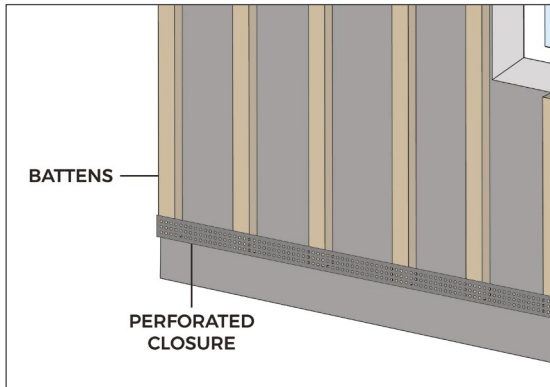
Plan trim placement before starting installation to minimise board cutting and maintain clean lines around each opening. Always ensure that all trims are securely fixed and sealed where necessary to maintain weather resistance. For additional trim or fixing advice, contact Cladco for guidance.

Cladco fibre cement click cladding is designed to be installed as a ventilated rainscreen cladding system. This means it provides a durable, weather-resistant façade but is not intended to act as a fully waterproof barrier. Always ensure a suitable weatherproof membrane is installed behind the cladding for full protection.



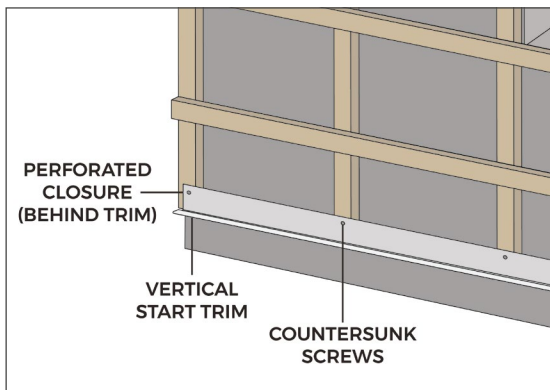
If you require additional trims and fixings for your project, please speak to us for assistance.

# FIBRE CEMENT CLICK TRIMS



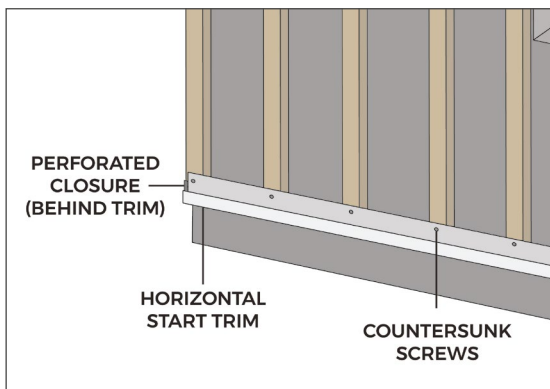
## Perforated Closure

A perforated closure is a ventilation profile fitted at the top and bottom of façades, and above or below windows and doors. It prevents birds, rodents and insects from entering the cavity while maintaining airflow, ensuring the system remains ventilated and protected.



## Vertical Start Trims

A vertical start trim is installed at the base of a wall to support Cladco fibre cement click wall cladding in vertical installations. It provides a secure seating point for the first board, keeps the system aligned, and must be repeated every 3.6m for each new run of boards.



## Horizontal Start Trims

A horizontal start trim is the first component installed at the base of a wall when fitting Cladco fibre cement click wall cladding in horizontal installations. Fixed level across the façade, it provides a secure foundation for the first board, ensures correct alignment, and maintains spacing throughout the system.

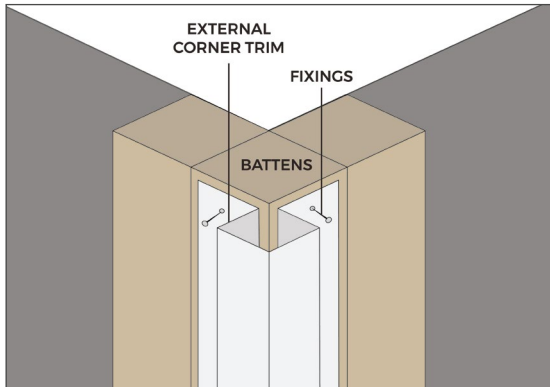


## IMPORTANT TIP

Always install trims before fitting boards. Planning and pre-fitting trims will ensure cleaner alignment, minimise cutting, and create a professional finish. Leave a 3-5mm gap between board ends and trims to allow for natural movement.

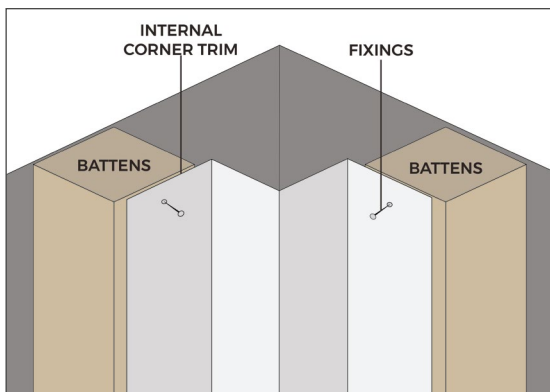


# FIBRE CEMENT CLICK TRIMS



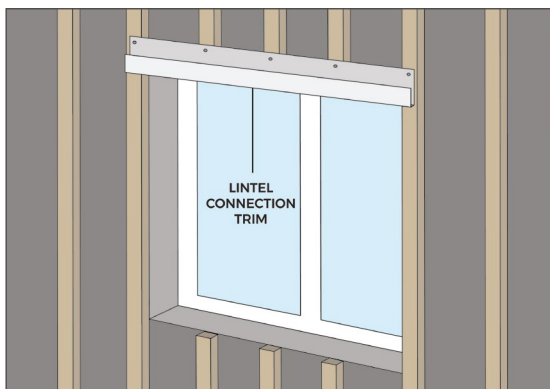
## External Corner Trim

An external corner trim provides a neat, durable finish for outside corners when installing Cladco fibre cement click wall cladding. Installed vertically before the boards, it creates a defined edge detail, allowing boards to slot securely into place while maintaining alignment, weather protection, and a professional appearance at external junctions.



## Internal Corner Trim

An internal corner trim is used at inside wall junctions to create a smooth, consistent edge detail. Installed vertically before boards are fitted, it allows boards to slot neatly into place while preserving ventilation and weather resistance at internal corners.



## Lintel Connection Trim

A lintel connection trim is fitted above windows and doors to create a clean, protective finish at the head of an opening. It is suitable for use with both full and cut boards and features drainage holes at the rear to prevent water pooling while allowing airflow through the system.



## IMPORTANT TIP

Always measure and cut trims before starting board installation. Pre-fitting trims ensures straight lines and consistent spacing, and helps avoid unnecessary cutting or adjustments during installation.

# AFTERCARE

---



## MAINTENANCE

Keep Cladco fibre cement click wall cladding boards free from dirt and debris by cleaning them regularly with lukewarm or cold water. For stubborn marks, such as bird droppings, use a mild household dish soap.

Mildew and algae are common on outdoor surfaces but will not penetrate the fibre cement boards. To maintain their appearance, check the boards seasonally and give them a light clean when needed to remove dirt, pollution, and surface stains.

Boards are finished using a durable paint-and-bake process to achieve their colour and strength. If you wish to paint the boards in a different colour, we recommend purchasing the unpainted fibre cement click wall cladding boards for best results.

Important: Do not use high-pressure cleaning systems, as these may damage the painted surface and protective finish of the boards.



## EFFLORESCENCE

If you notice signs of efflorescence (a white, powdery deposit that can form on the surface), we recommend soft washing the boards as soon as possible. Early cleaning makes removal easier and helps prevent the deposits from becoming more stubborn over time.

# FREQUENTLY ASKED QUESTIONS

---

## Where can I install my fibre cement click cladding boards?

These boards can be installed on both interior and exterior walls, provided the correct support structure is used. They are suitable for garages, sheds, houses, garden rooms, and other similar projects.

## Can I use a pressure washer?

No, pressure washers are not recommended, as high pressure may strip the boards of their protective paint finish. Clean boards with lukewarm or cold water and a mild household detergent, using a soft brush or cloth.

## What is dimensionally very stable?

Cladco fibre cement click wall cladding boards expand and contract slightly when exposed to changes in temperature, but these movements are minimal compared to alternative materials, making the boards very stable and reliable for long-term use.

## Can Cladco fibre cement click wall cladding boards be installed vertically?

Yes, the boards can be installed vertically. A horizontal counter batten system, vertical start trims, and the correct corner trims must be used to provide proper support, ventilation, and alignment.

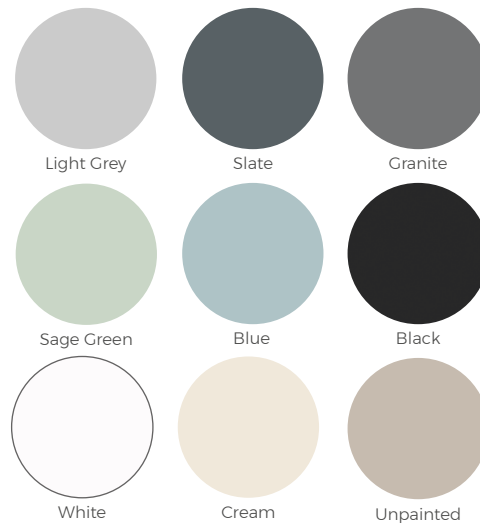
## Can Cladco fibre cement click wall cladding boards be painted?

Boards are finished with a durable paint-and-bake process for strength and longevity. If you wish to paint your boards a different colour, we recommend purchasing the unpainted boards. Cladco touch-up paint is available for minor surface repairs.

## Are the boards scratch resistant?

The boards are highly durable and coated with three layers of baked paint for improved scratch resistance. However, they can still be damaged if handled incorrectly, so care should be taken during installation.

## What colours are available?



## Can I order a sample?

Cladco fibre cement click wall cladding is available in nine colours: Light Grey, Slate, Blue, Granite, White, Black, Cream, Sage Green, and Unpainted. Samples can be ordered online or by calling our sales team on 01837 659901. Each sample pack includes two colour swatches and a Cladco brochure.

## Why are white marks appearing on my fibre cement click cladding?

White marks are caused by efflorescence, a natural reaction in fibre cement products when moisture is present.

Will the white marks disappear over time?  
Yes, efflorescence naturally fades as wind and rain dissolve the deposits. Regular cleaning will help ensure no long-term staining occurs.

## Will the white marks disappear over time?

Yes, efflorescence naturally fades as wind and rain dissolve the deposits. Regular cleaning will help ensure no long-term staining occurs.

## How can I prevent efflorescence?

To reduce the likelihood of efflorescence:

- Store boards indoors until ready to install.
- Avoid installing boards while they are wet.
- Maintain proper airflow behind and around the perimeter of the cladding for ventilation.





**Head Office**

Beardown Road  
Exeter Road Industrial Estate  
Okehampton  
Devon  
EX20 1UA

01837 659901

[info@cladco.co.uk](mailto:info@cladco.co.uk)

[www.cladco.co.uk](http://www.cladco.co.uk)

**CLADCO**  
PROFILES

Pictured - Cream Fibre Cement Click Wall Cladding Boards