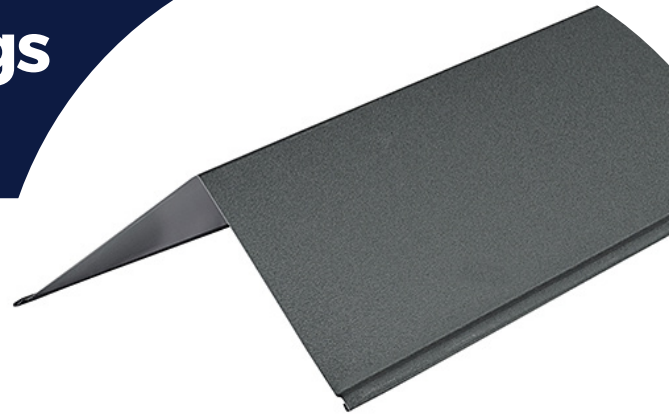


90° Corner Barge Flashings

GreenCoat® Pural BT



Sometimes referred to as verges, roof edge barge flashings can be used at the end of a run of sheets and will seal off the edge. A vital part of any profiled clad roof, metal roof barge flashing helps to weatherproof a building and add an aesthetically pleasing element to your finished roof project.

These metal roof barge flashings are available in 150mm x 150mm and 200mm x 200 mm, made from GreenCoat® Pural BT and will match or contrast the look of your roof, depending on the look you're after. You can secure them to your roofing using stitching screws and will need to allow for an overlap of a minimum of 200mm when fitting end on end.

Metal Roof Barge Flashings for your Roofing

These are manufactured 3m in length and refolded to a 90-degree internal angle, flexing 10 – 15 degrees either way, dependent on your needs. They include a safety welt to increase the strength of the material. We can aim to accommodate your needs as much as possible, all you need to do is contact us and give us the dimensions you're after and we'll look to help.

As they are a necessary part of your profiled clad building and with the range and colours that are available can enhance the aesthetics of any structure. Available in many colours and finishes to suit your roof sheeting, contact us if you have any queries at all.

SPECIFICATIONS	
Length	3 metres
Sizes available	150mm x 150mm or 200mm x 200mm
Angle	90° internal angle
Overlap	Allow 150mm

PLEASE NOTE – Extra care should always be taken when handling metal sheets and flashings we advise using the correct type of Glove when handling or moving metal sheets and flashings.



01837 659901 info@cladco.co.uk
www.cladco.co.uk

Beardown Road, Exeter Road Industrial Estate, Okehampton EX20 1UA