

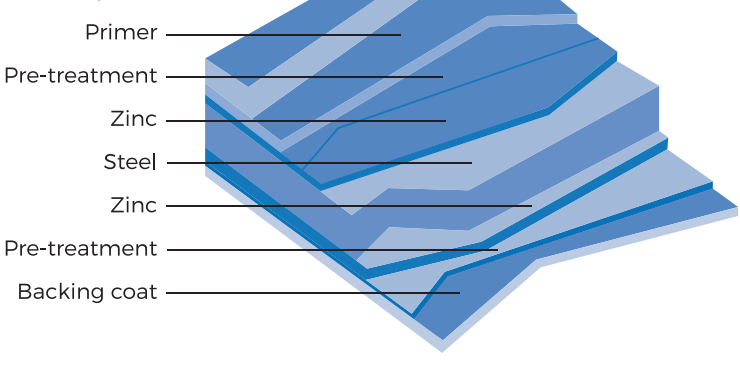
# Choice of Coatings



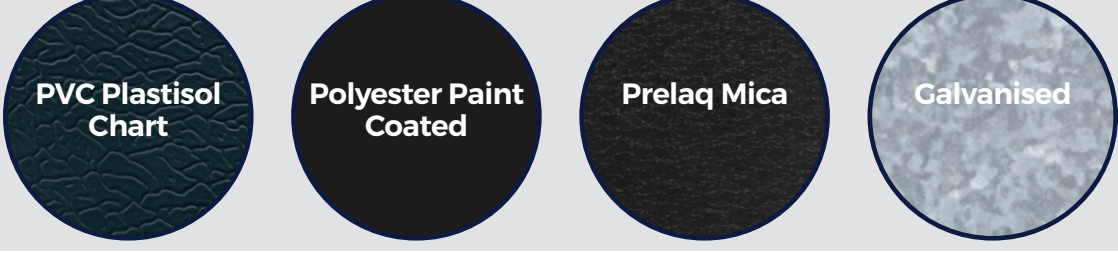
The coated steel strip we supply and profile into sheeting and flashings is produced by leading suppliers including Heijling Zonda, Tata, SSAB, and Eurosteel giving us control over quality and traceability of the material we use.

To produce high quality pre-coated sheeting a system of multi layer coatings is applied to zinc coated high tensile steel strip and oven cured to ensure optimum adhesion. This gives a sheet with excellent corrosion resistance and climatic protection together with abrasion resistance and high strength. We provide an extensive range of colours, where choice and aesthetic appeal can be matched to environmental and performance requirements.

Please note our dripstop coating is only available on Box Profile and Corrugated profiles, please contact us for further information.



## Jump to colour chart



## PVC Plastisol Chart



PVC Plastisol Colours are available in Anthracite, Black, Chestnut, Goosewing Grey, Merlin Grey, Juniper Green, Moorland Green, Oliver Green, Slate Blue, Vandyke Brown and White.

Please note: Colours are for guidance purposes only, actual colour may vary from image supplied. - Numbers represent nearest BS/RAL reference. If you would like to see the physical colour before purchasing, please contact us for a free swatch sample.

### PVC PROFILE

We manufacture PVC Plastisol coated sheeting in 34/1000 profiled sheeting with a 34mm deep profile which gives 1000mm cover width which can be used at a minimum roof pitch of 4°. 32/1000 profiled sheeting with a 32mm deep profile which gives 1000mm cover width which can be used at a minimum roof pitch of 4°. 3" corrugated profile of 13 corrugations of 3 inches giving 990mm width cover which can be used at a minimum roof pitch of 10°.

### QUALITY

The steel substrate has a hot dipped galvanised coating of 275 grammes per square metre. The substrate is primed and 200 microns of leather grain embossed Plastisol are applied to the external surface. The reverse/ internal surface is galvanised and

coated with a standard alkali grey wash coat. This gives a very long life (typically 15 to 25 years to first maintenance with a life in excess of 40 years in normal environments) with a high resistance to scratching and damage.

### UV RESISTANCE

The Plastisol applied consists of Polyvinyl Chloride based Thermoplastic Resins with short molecular chains for better UV resistance particularly suited to the construction sector.

### HEAT RESISTANCE

Maximum continuous temperature -40o C to +80o C.

### TOLERANCES

All dimensions are subject to roll forming tolerances.

### THICKNESS

PVC Plastisol coated 34/1000 profiled sheeting is available in 0.5mm and 0.7mm thickness.

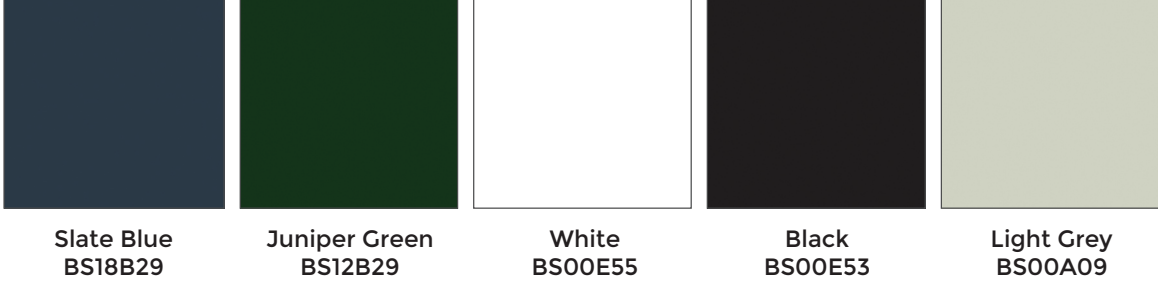
### COLOUR

We supply PVC Plastisol in standard colours from stock: Goosewing Grey, Merlin Grey, Anthracite, Moorland Green, Olive Green, Juniper Green, Chestnut, Vandyke Brown, Slate Blue, Black and White.

### STORAGE & HANDLING

For advice on storage and handling please consult the installation section of our website.

## Polyester Paint Coated Chart



Polyester Paint Coated Colours are available in Slate Blue, Juniper Green, White, Black and Light Grey.

Please note: Colours are for guidance purposes only, actual colour may vary from image supplied. - Numbers represent nearest BS/RAL reference. If you would like to see the physical colour before purchasing, please contact us for a free swatch sample.

### POLYESTER PAINT COATED PROFILE

We manufacture Polyester Paint coated sheeting in 34/1000 profiled sheeting with a 34mm deep profile which gives 1000mm cover width which can be used at a minimum roof pitch of 4°. 32/1000 profiled sheeting with a 32mm deep profile which gives 1000mm cover width which can be used at a minimum roof pitch of 4°. 3" corrugated profile of 13 corrugations of 3 inches giving 990mm width cover which can be used at a minimum roof pitch of 10°.

### QUALITY

The steel substrate has a hot dipped galvanised coating of 275 grammes per square metre. The substrate is primed and coated with 25 microns of high grade Polyester

enamel paint. The reverse/internal surface is galvanised and coated with a standard alkali grey wash coat. This gives long life (typically 8 to 12 years to first maintenance with a life in excess of 20 years in normal environments) but only has a moderate resistance to scratching.

### HEAT RESISTANCE

Maximum continuous temperature -40° C to +80° C.

### TOLERANCES

All dimensions are subject to roll forming tolerances.

### THICKNESS

Polyester paint coated sheeting is available in 0.55mm and 0.70mm thickness.

### COLOUR

Polyester paint finish sheeting is available in standard colours, Juniper Green, Slate Blue, White, Black or Light Grey.

### STORAGE & HANDLING

For advice on storage and handling please consult the installation section of our website.

### TYPICAL APPLICATIONS:

Cladding, roofing and other building components, curtain walling, infill panels, partitioning, portable accommodation, cold stores, garage doors and vehicle panels.

## Prelaq Mica



Prelaq Mica coating is available in either Black, Graphite Grey or Copper Brown Colour.

Please note: Colours are for guidance purposes only; actual colour may vary from image supplied. - Numbers represent nearest BS/RAL reference. If you would like to see the physical colour before purchasing, please contact us for a free swatch sample.

### PRELAQ MICA PROFILE

Prelaq Mica Coated finish is only available in the tile form sheeting profile on our website. If you would like this finish on another profile, please contact us on 01837 659901.

### QUALITY

Prelaq Mica product is manufactured according to the BT patent (Bio-based Technology) and therefore holds a high environmental position. In BT coating where a substantial portion of the traditional fossil oil is replaced by Swedish rapeseed oil, which is unique on the market. SSAB holds a worldwide patent for this coating technology.

The thickness of the prelaq mica coating is optimized for wear resistance, weathering resistance and low resource consumption. Prelaq Mica possesses excellent colour retention and also provides good protection against corrosion.

The traditional appearance of this pantile effect roofing sheet makes it perfect for sheds, garages extensions and more. Prelaq Mica coating is available in two colour options, which include black, graphite grey and copper brown.

### HEAT RESISTANCE

Prelaq Mica products provide high colour retention and long-lasting

finishes that resist rust, white rust and UV radiation as well as scratches and the build-up of dirt, for reduced maintenance.

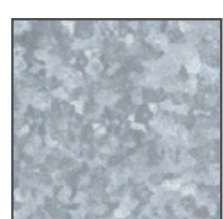
### THICKNESS

Prelaq Mica coating is available in 0.6mm thickness

### STORAGE & HANDLING

For advice on storage and handling please consult the installation section of our website.

## Galvanised



Galvanised

Please note: Colours are for guidance purposes only; actual colour may vary from image supplied. - Numbers represent nearest BS/RAL reference. If you would like to see the physical colour before purchasing, please contact us for a free swatch sample.

### GALVANISED PROFILE

We manufacture galvanised coated sheeting in either 34/1000 Box profiled sheeting with a 34mm deep profile and a 166mm pitch in a 1000mm cover width which can be used at a minimum roof pitch of 4°. 32/1000 profiled sheeting with a 32mm deep profile which gives 1000mm cover width which can be used at a minimum roof pitch of 4°. or 3" corrugated profile of 13 corrugations of 3 inches giving 990mm width cover which can be used at a minimum roof pitch of 10°.

### TOLERANCES

All dimensions are subject to roll forming tolerances.

### THICKNESS

Galvanised sheeting is available in 0.5mm and 0.7mm thickness.

### COLOUR

Galvanised

### STORAGE & HANDLING

For advice on storage and handling please consult the installation section of our website.

### TYPICAL APPLICATIONS

Cladding, roofing and other building components, curtain walling, infill panels, partitioning, portable accommodation, cold stores, garage doors and vehicle panels.



Order online at [www.cladco.co.uk](http://www.cladco.co.uk)  
Call us on 01837 659901

**CLADCO**  
ROOFING