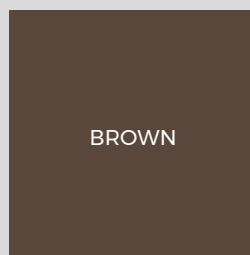


STARTER CLIPS AND SCREWS BAMBOO DECKING



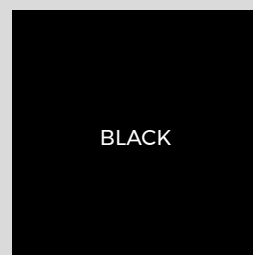
Cladco starter clips and screws enable bamboo decking boards to be installed flush against walls or fences, ensuring an accurate and precise fit. Supplied in packs of 50, each clip includes three fixing holes for easy installation. The pack also contains stainless steel 35mm screws and a Torx drill bit for convenience and durability.

FIXING CLIP COLOUR



BROWN

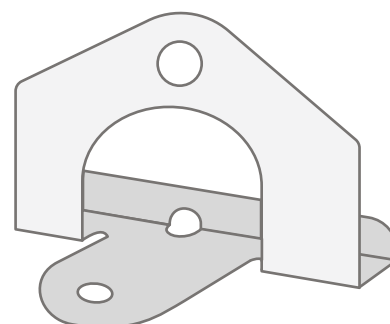
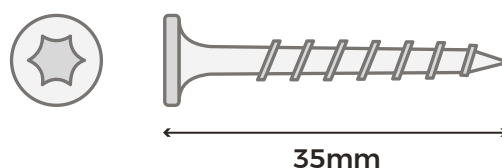
SCREW COLOUR



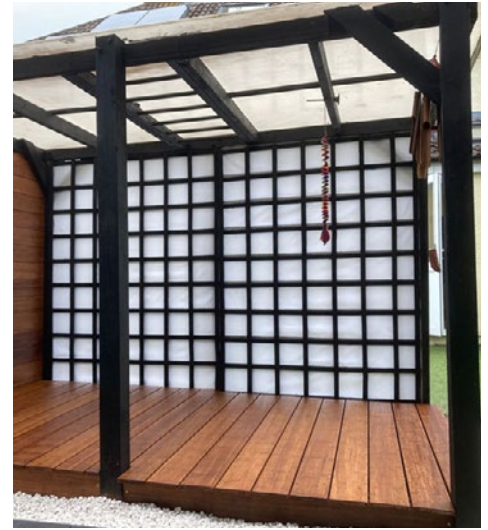
BLACK

SPECIFICATIONS

SKU	FIXBAMSC
Screws	Stainless Steel M4x35mm, Torx Head (drill bit supplied)
Pack Quantity	50



Please Note: Images are for illustration purposes only. Actual products may vary slightly from those shown.



INSTALLATION ADVICE

Joist Spacing

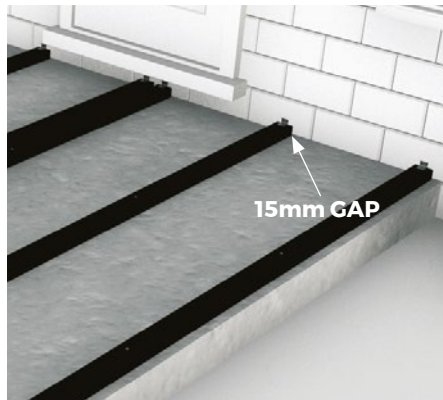
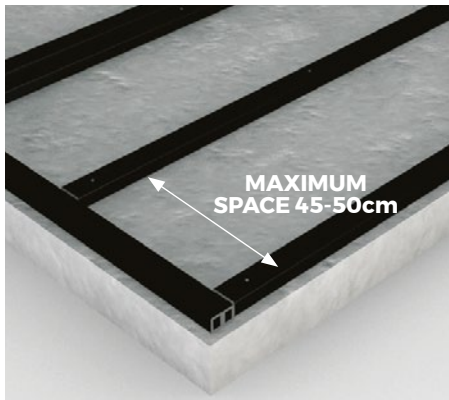
Create a sturdy substructure for your bamboo decking boards by installing joists spaced 45-50cm apart. We recommend using our composite joists for optimal support and durability.

Starter Clips

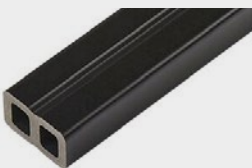
Before laying your bamboo decking boards, fix Cladco bamboo decking starter clips onto the ends of each joist where the boards will sit. Leave a small gap between the clips and any adjacent wall or fence.

Board Installation

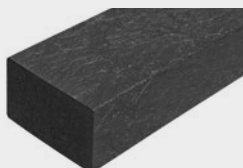
With starter clips securely in place, lay the first decking board, ensuring it connects firmly with each starter clip. Subsequent boards can then be secured using our fixing clips for a seamless finish.



PRODUCT ACCESSORIES



COMPOSITE JOISTS



RECYCLED
PLASTIC JOISTS



BAMBOO DECKING
BOARDS



WEED CONTROL MAT



BAMBOO DECKING
FIXING CLIPS



www.cladco.co.uk
T: 01837 659901 E: info@cladco.co.uk

CLADCO
PROFILES