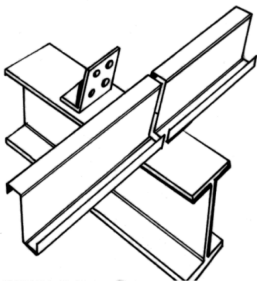


Zed Purlins / Sheeting Rails

Cladco Profiles Ltd. manufacture cold rolled steel Zed purlins / sheeting rails which provide a horizontal structural support system for either roofing or vertical wall cladding. Our production system enables the accurate manufacture of purlins to virtually any length. This traditional well proven system of support offers a high degree of strength, flexibility and weight saving over timber or hot rolled steel sections with ease of handling on site and during installation at a lower cost. Our Z purlin 175mm profiles made from 1.8mm thickness steel. Purlins are made from high tensile Z39 structural grade steel with a galvanised coating for long life so no additional finish is required.

Our sections are designed to BS EN 1993-1-3:2006 using analysis and testing to satisfy the requirements of BS5950: Part 5 (1998). We supply sleeves for joining purlins together and cleats for joining purlins to rafters and anti-sag bars. Our Z purlins can be produced for sleeved, double span sleeved, butted and over lapped purlin systems. This, combined with the simplicity of cleat details and ease of handling, make steel purlins suitable for most roof and wall structures.



Butt Load Table Section 175 Z 1.8

Span (m)	Total Working U.D.L. (kN)	Working Loads						Deflection Span/180	Ultimate U.D.L. in kN / span			
		Allowable loading in kN/sq m							Gravity Load	Uplift - metal cladding		
		Purlin centres in millimetres								Number of anti sag rods		
		1000	1200	1500	1800	2100	2400		0	1	2	
4.00	13.30	3.32	2.77	2.22	1.85	1.58	1.38	14.56	19.94	15.20	19.94	19.94
4.50	11.50	2.56	2.13	1.70	1.42	1.22	1.06	11.50	17.73	12.87	17.47	17.73
5.00	9.32	1.86	1.55	1.24	1.04	0.89	0.78	9.32	15.96	11.15	14.75	15.96
5.50	7.70	1.40	1.17	0.93	0.78			7.70	14.50	9.84	12.68	14.50
6.00	6.47	1.08	0.90	0.72				6.47	13.30	8.81	11.08	13.30
6.50	5.51	0.85	0.71					5.51	12.27	7.97	9.81	12.27



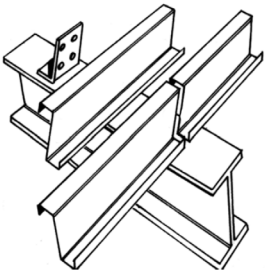
Order online at www.cladco.co.uk
Call us on 01837 659901

CLADCO
ROOFING

Double span load tables

Section 175 Z 1.8

Span (m)	Total Working U.D.L. (kN)	Working Loads						Deflection Span/180	Ultimate U.D.L. in kN / span			
		Allowable loading in kN/sq m							Gravity Load	Uplift - metal cladding		
		Purlin centres in millimetres								Number of anti sag rods	0	1
		1000	1200	1500	1800	2100	2400					
4.00	13.30	3.32	2.77	2.22	1.85	1.58	1.38	30.70	19.94	19.94	19.94	19.94
4.50	11.82	2.63	2.19	1.75	1.46	1.25	1.09	24.26	17.73	17.73	17.73	17.73
5.00	10.64	2.13	1.77	1.42	1.18	1.01	0.89	19.65	15.96	15.96	15.96	15.96
5.50	9.67	1.76	1.47	1.17	0.98	0.84	0.73	16.24	14.50	14.50	14.50	14.50
6.00	8.86	1.48	1.23	0.98	0.82	0.70		13.65	13.30	13.30	13.30	13.30
6.50	8.18	1.26	1.05	0.84	0.70			11.63	12.27	12.27	12.27	12.27
7.00	7.60	1.09	0.90	0.72				10.03	11.40	11.40	11.40	11.40
7.50	7.09	0.95	0.79					8.73	10.64	10.64	10.64	10.64
8.00	6.65	0.83	0.69					7.68	9.97	9.97	9.97	9.97



Sleeved load table

Section 175 Z 1.8

Span (m)	Total Working U.D.L. (kN)	Working Loads						Deflection Span/180	Ultimate U.D.L. in kN / span			
		Allowable loading in kN/sq m							Gravity Load	Uplift - metal cladding		
		Purlin centres in millimetres								Number of anti sag rods	0	1
		1000	1200	1500	1800	2100	2400					
4.00	16.62	4.15	3.46	2.77	2.31	1.98	1.73	21.83	24.93	24.93	24.93	24.93
4.50	14.77	3.28	2.74	2.19	1.82	1.56	1.37	17.25	22.16	22.16	22.16	22.16
5.00	13.30	2.66	2.22	1.77	1.48	1.27	1.11	13.97	19.94	19.94	19.94	19.94
5.50	11.55	2.10	1.75	1.40	1.17	1.00	0.87	11.55	18.13	18.13	18.13	18.13
6.00	9.70	1.62	1.35	1.08	0.90	0.77	0.67	9.70	16.62	16.26	16.62	16.62
6.50	8.27	1.27	1.06	0.85	0.71			8.27	15.34	14.63	15.34	15.34
7.00	7.13	1.02	0.85	0.68				7.13	14.25	13.31	14.25	14.25
7.50	6.21	0.83	0.69					6.21	13.30	12.20	13.30	13.30
8.00	5.46	0.68						5.46	12.46	11.27	12.46	12.46



Order online at www.cladco.co.uk
Call us on 01837 659901

CLADCO
ROOFING