



# STANDING SEAM

## ROOFING SHEETS WITHOUT RIBS

Cladco 30/500 Standing Seam Sheets without ribs offer a popular flat finish with hidden fixings. The weather-resistant GreenCoat® Pural BT coating is durable and sustainable to manufacture. Available in lengths up to 8m metres, Standing Seam Sheets can be customised with or without an eaves lip depending on application.

### COLOUR RANGE



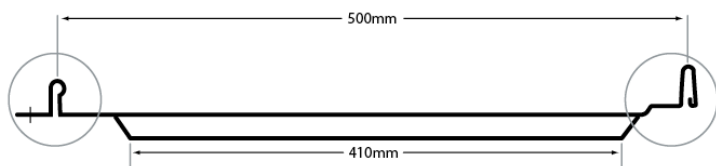
### SHEET SPECIFICATIONS

Length	1.5m - 7m
Width	500mm (lapped)
Thickness	0.7mm
Weight	5.11kg/m <sup>2</sup>
Applications	Wall or Roof
External Finish	GreenCoat® Pural BT

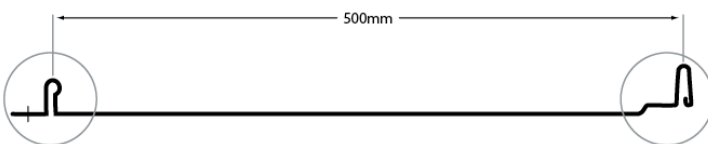
Internal Finish	Light Grey Polyester
External Face	30mm Profile Height, 500mm Pitch Centres
Minimum Pitch	6 Degrees

### TEST CERTIFICATIONS

Quality	CE Marked (BS EN 14783:2013)
Fire Rating	Class A1 (BS EN 13501)



WITH EAVES LIP



WITHOUT EAVES LIP



GreenCoat® Pural BT  
Coating



Scratch And  
Corrosion Resistant



0.7mm  
Thickness



Suitable For  
Cladding  
And Roofing



Optional Eaves  
Lip Secures To  
Flashings



Hidden  
Fixing  
System



#### MATERIALS

Nordic quality,  
sustainable SSAB steel  
promotes sustainable  
production.



#### SURFACES

A durable GreenCoat®  
Pural BT coating with a  
matt finish, with  
or without ribs.



#### ACCESSORIES

Annular Ring Nails  
and Flashings are  
available to complete  
your project.



#### RESISTANCE

Pural BT coated Sheets  
are weather, corrosion,  
scratch and UV  
resistant.



#### GARANTEE

Sheets have a  
long life span  
of up to  
50 years.

## SUSTAINABLE MATERIALS

Cladco Standing Seam Roofing Sheets are manufactured from SSAB Steel coated with GreenCoat® Pural BT. The use of Swedish rapeseed oil, in place of traditional fossil fuel oils, promotes sustainable production methods which reduce our environmental footprint to provide you with a high-quality, A1 fire-rated roofing and cladding product.

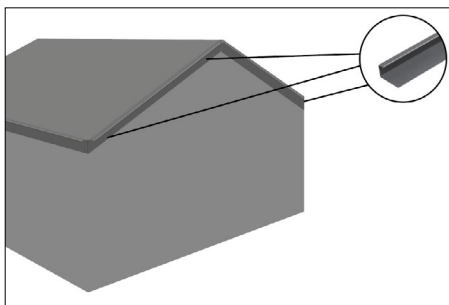
## AFTERCARE

Standing Seam Roof Sheets are low-maintenance and require little in the way of upkeep. We recommend, however, that annual inspection of the Sheeting is carried out, and any debris or dirt build up is removed or cleaned away.

## INSTALLATION ADVICE

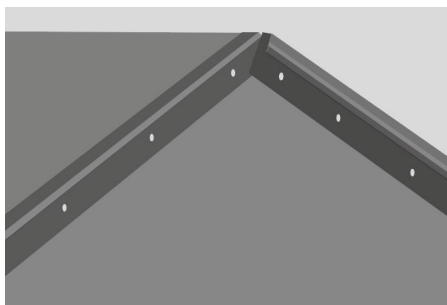
### Suitable Structure

Installing Standing Seam Sheets requires OSB or plywood fixed onto purlins for a stable base. A breathable membrane must be stapled to the OSB before laying Flashings and Sheets.



### Secure Flashings

Measure and install Backer Plate Flashings and J Rail Flashings (for side cladding) first before fixing Standing Seam Sheets. Flashings can be secured to OSB or plywood using Annular Ring Nails.



### Connecting Sheets

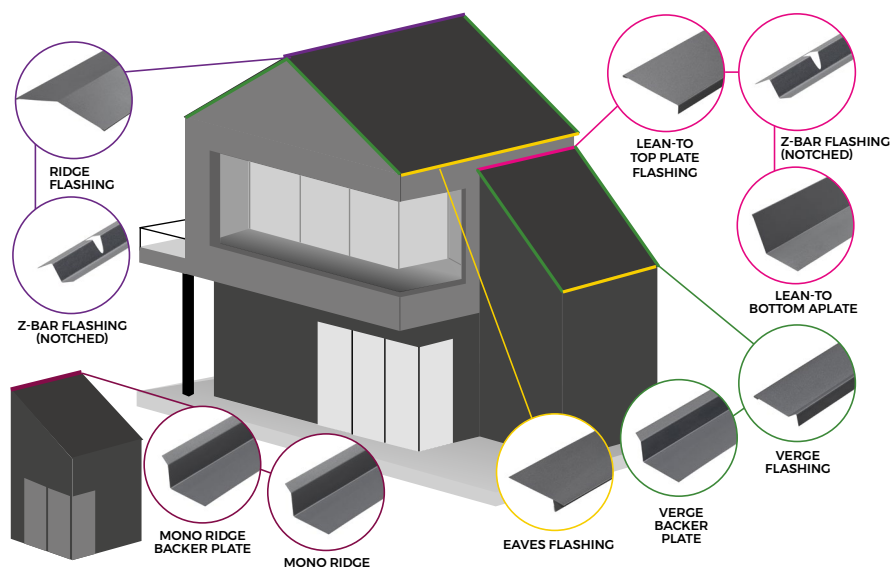
Standing Seam Sheets are fixed in place using Annular Ring Nails, which are hidden under the seams. Using a rubber mallet, link seams together and use an eaves closer tool to clamp eaves lips, where applicable.



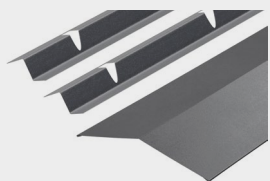
## FLASHINGS TO FINISH

Once all Standing Seam Sheets are installed, Ridge, Barge and Corner Flashings can be installed onto upstands and Z Bars. This will complete your Standing Seam installation for a sealed, professional finish.

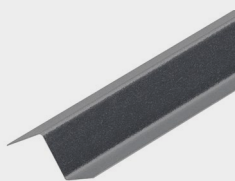
For detailed information about installation, please read our Standing Seam Installation Guide.



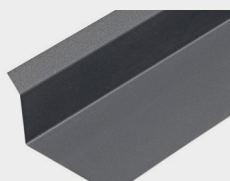
## PRODUCT ACCESSORIES



RIDGE FLASHING  
KITS



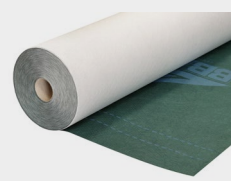
Z BAR FLASHINGS



FLASHING BACKER  
PLATES



ANNULAR RING NAILS



VENT 3 PRO  
BREATHABLE  
MEMBRANE

For a full list of tools required, please refer to our Standing Seam Installation Guide.