

STANDING SEAM

ROOFING SHEETS WITH RIBS

Cladco 30/500 Standing Seam Roofing Sheets with Ribs are crafted from 0.7mm thick steel, coated with sustainable GreenCoat® Pural BT. The ribbed design is chosen to minimise 'drumming' noise after installation. Standing Seam Sheets can be used for both side cladding and roofing and are available with or without an eaves lip.

COLOUR RANGE



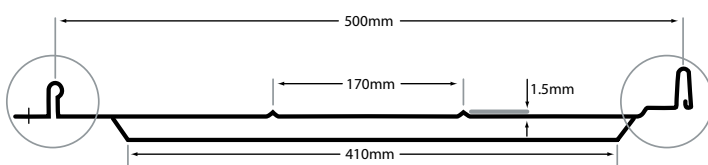
SHEET SPECIFICATIONS

Length	1.5m - 7m
Width	500mm (lapped)
Thickness	0.7mm
Weight	5.11kg/m ²
Applications	Wall or Roof
External Finish	GreenCoat® Pural BT

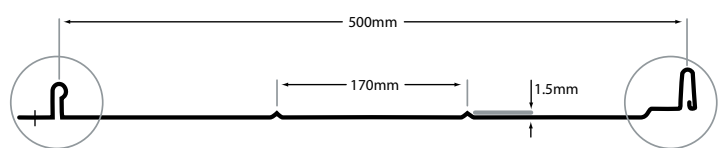
Internal Finish	Light Grey Polyester
External Face	30mm Profile Height, 500mm Pitch Centres
Minimum Pitch	6 Degrees

TEST CERTIFICATIONS

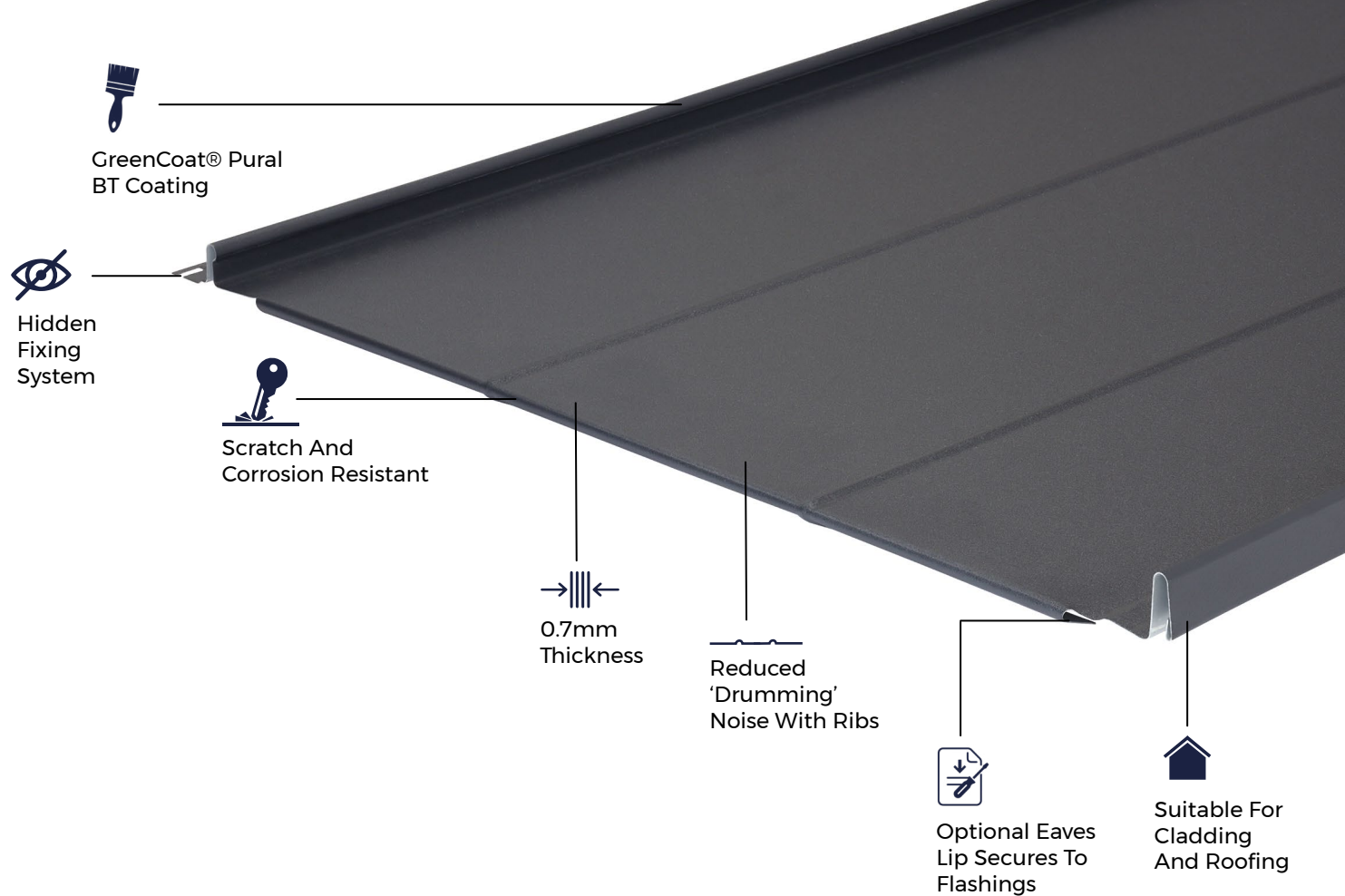
Quality	CE Marked (BS EN 14783:2013)
Fire Rating	Class A1 (BS EN 13501)



WITH EAVES LIP



WITHOUT EAVES LIP



MATERIALS

Nordic quality, sustainable SSAB steel promotes sustainable production.



SURFACES

A durable GreenCoat® Pural BT coating with a matt finish, with or without ribs.



ACCESSORIES

Annular Ring Nails and Flashings are available to complete your project.



RESISTANCE

Pural BT coated Sheets are weather, corrosion, scratch and UV resistant.



GUARANTEE

Sheets have a long life span of up to 50 years.

SUSTAINABLE MATERIALS

Cladco Standing Seam Roofing Sheets are manufactured from SSAB Steel coated with GreenCoat® Pural BT. The use of Swedish rapeseed oil, in place of traditional fossil fuel oils, promotes sustainable production methods which reduce our environmental footprint to provide you with a high-quality, A1 fire-rated roofing and cladding product.

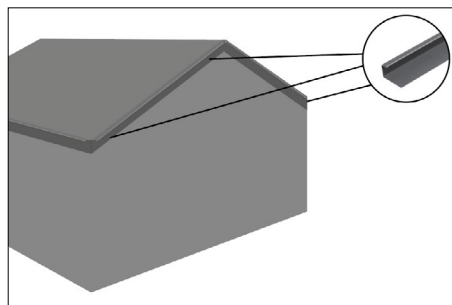
AFTERCARE

Standing Seam Roof Sheets are low-maintenance and require little in the way of upkeep. We recommend, however, that annual inspection of the Sheeting is carried out, and any debris or dirt build up is removed or cleaned away.

INSTALLATION ADVICE

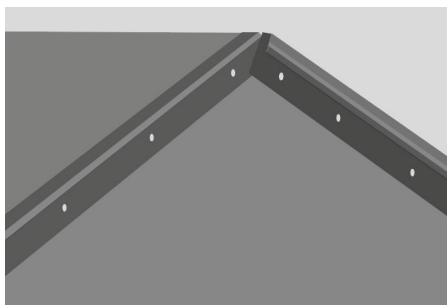
Suitable Structure

Installing Standing Seam Sheets requires OSB or plywood fixed onto purlins for a stable base. A breathable membrane must be stapled to the OSB before laying Flashings and Sheets.



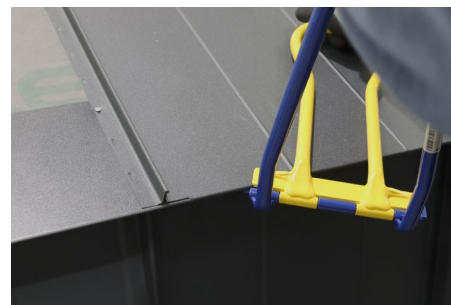
Secure Flashings

Measure and install Backer Plate Flashings and J Rail Flashings (for side cladding) first before fixing Standing Seam Sheets. Flashings can be secured to OSB or plywood using Annular Ring Nails.



Connecting Sheets

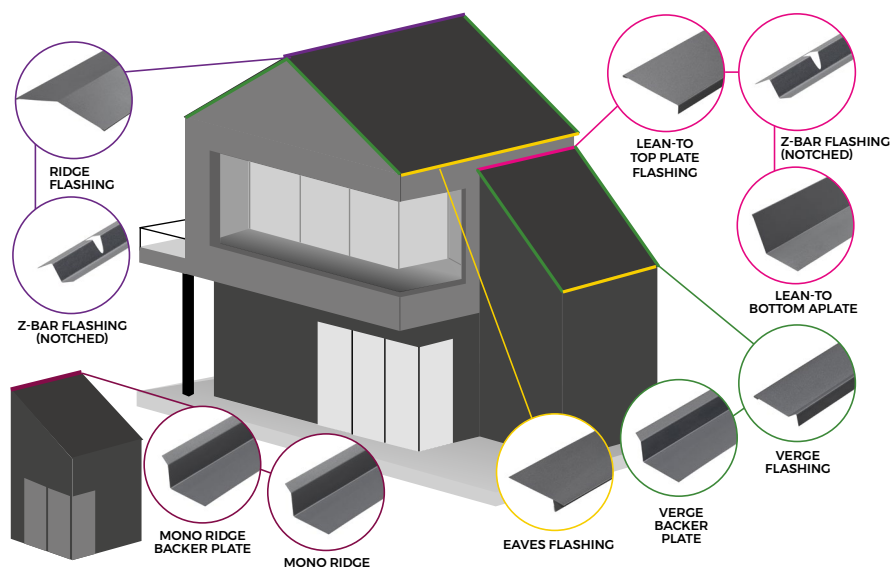
Standing Seam Sheets are fixed in place using Annular Ring Nails, which are hidden under the seams. Using a rubber mallet, link seams together and use an eaves closer tool to clamp eaves lips, where applicable.



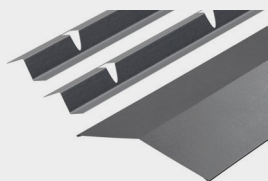
FLASHINGS TO FINISH

Once all Standing Seam Sheets are installed, Ridge, Barge and Corner Flashings can be installed onto upstands and Z Bars. This will complete your Standing Seam installation for a sealed, professional finish.

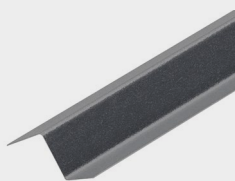
For detailed information about installation, please read our Standing Seam Installation Guide.



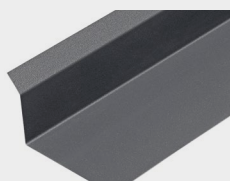
PRODUCT ACCESSORIES



RIDGE FLASHING KITS



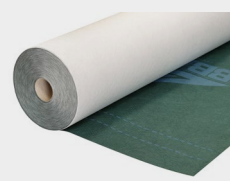
Z BAR FLASHINGS



FLASHING BACKER PLATES



ANNULAR RING NAILS



VENT 3 PRO BREATHABLE MEMBRANE

For a full list of tools required, please refer to our Standing Seam Installation Guide.