

32/1000 BOX PROFILE STEEL SHEETING

Manufactured from high-tensile coated steel in either 0.5mm or 0.7mm thickness, Cladco's 32/1000 box profile sheets feature six uniform ribs with 200mm centres and 32mm depth, offering a 1000mm cover width when lapped.

Designed for industrial, commercial, agricultural, and domestic use, these sheets are available in galvanised, polyester paint, or PVC plastisol finishes—providing a durable, weather-resistant solution with a clean, professional appearance.

AVAILABLE COATINGS



POLYESTER PAINT



PVC PLASTISOL



GALVANISED

ROOFING SPECIFICATIONS

Available Thickness	0.5mm – Ideal for wall cladding 0.7mm – Recommended for roofing
Minimum Pitch	4°
Standard Width (When Lapped)	1000mm
Minimum Length	0.5m
Maximum Length	7m (0.5mm thickness) 9m (0.7mm thickness)
Weight	4.9kg/m ² (0.5mm) 5.9kg/m ² (0.7mm)

ACCESSORIES AVAILABLE

GRP Roof Lights	Yes
Drip Stop Available	Yes
Foam Fillers	Yes

SUITABLE FOR ROOFING & CLADDING



MATERIALS

Manufactured from high-tensile, cold-rolled steel with a protective zinc or colour coating, tested to CE standard EN 14782 for quality and performance.



SURFACES

Choose from PVC plastisol, polyester paint, or galvanised finishes—each offering different levels of durability, protection, and visual appeal to suit your project.



ACCESSORIES

A full range of flashings, purlins, and fixings are available to match your sheets, ensuring a watertight, durable, and visually consistent finish.



LOW MAINTENANCE

Durable coated finishes require minimal upkeep, resisting weathering, dirt build-up, and corrosion for a long-lasting, low-maintenance exterior solution.

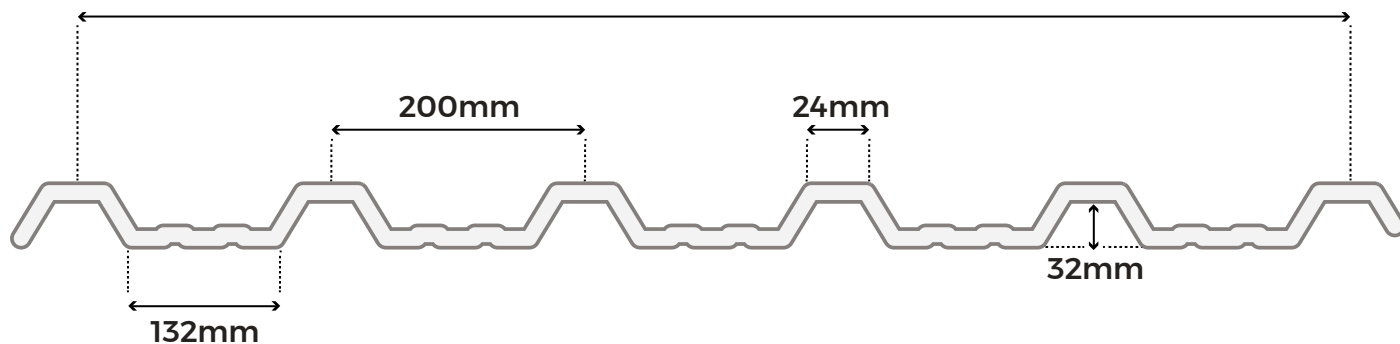


LONGEVITY

PVC Plastisol: 15–25 years
Polyester Paint: 8–12 years
Galvanised: Up to 12 years

Lifespan varies depending on installation environment and ongoing maintenance.

1000mm (when lapped)



Please note: Images are for illustration purposes only. Actual products may vary slightly from those shown.

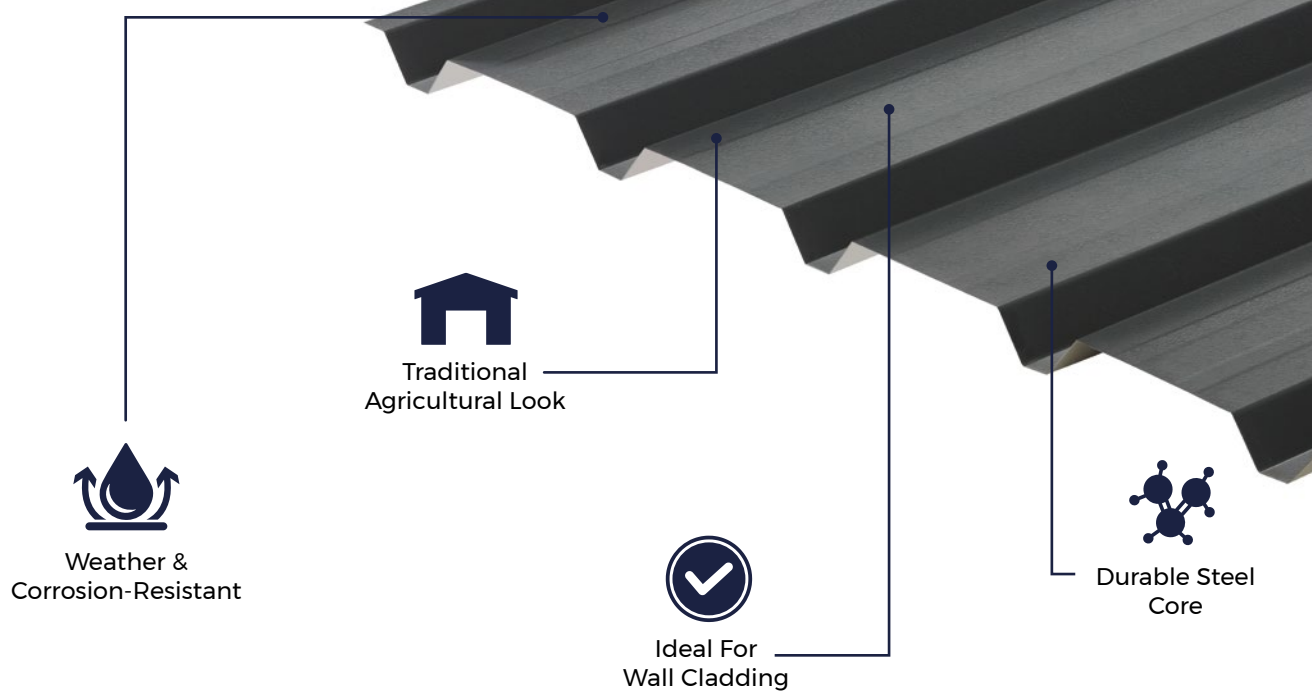


www.cladco.co.uk

T: 01837 659901 E: info@cladco.co.uk

CLADCO
PROFILES

REVERSE PROFILE - AVAILABLE ON REQUEST ONLY



MATERIALS

Available in 0.5mm or 0.7mm high-tensile steel, fully traceable and CE EN 14782 tested for roofing performance.



SURFACES

Available in PVC plastisol, polyester paint or galvanised finishes, each offering varying levels of protection, durability, and aesthetic appeal.



ACCESSORIES

We supply flashings, purlins, and accessories to match our sheets, helping you achieve a watertight, durable, and visually consistent installation.



LOW MAINTENANCE

Our durable coatings protect against rust, discolouration and weathering, offering a high-quality, low-maintenance roofing solution with minimal ongoing upkeep required.



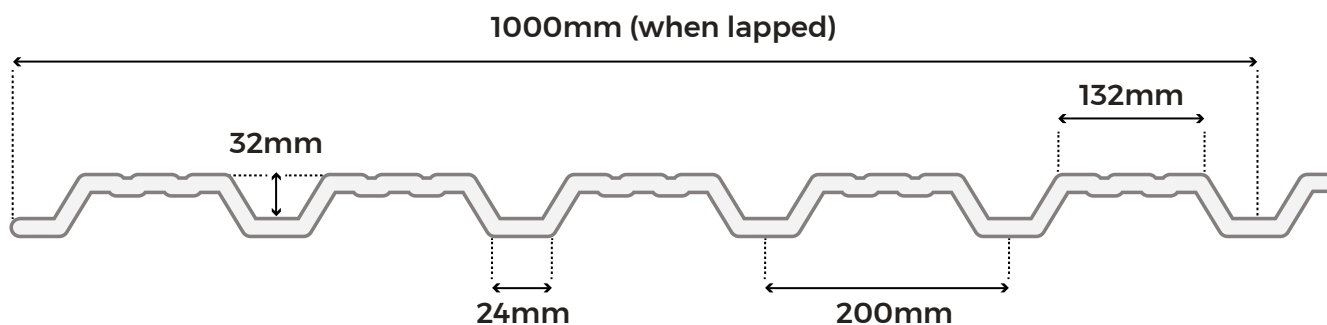
LONGEVITY

PVC plastisol lasts 15-25 years, polyester paint 8-12, and galvanised up to 12 years before maintenance. The lifespan depends on the environment and care.



CONTACT OUR SALES TEAM TO ORDER

Reverse 32/1000 box profile sheeting is available on request only and can't be purchased online. For more information and advice, give our friendly sales team a call on 01837 659901.



Please note: Images are for illustration purposes only. Actual products may vary slightly from those shown.



www.cladco.co.uk

T: 01837 659901 E: info@cladco.co.uk

CLADCO
PROFILES

32/1000 BOX PROFILE SKU

Coating and Colour	Thickness 0.5mm	Thickness 0.7mm
Polyester Paint Coated, Juniper Green	R32B5JG	R32B7JG
Polyester Paint Coated, Light Grey	R32B5LG	R32B7LG
Polyester Paint Coated, Black	R32B5BL	R32B7BL
Polyester Paint Coated, White	R32B5WH	R32B7WH
Polyester Paint Coated, Slate Blue	R32B5SB	R32B7SB
PVC Plastisol Coated, Juniper Green	R32A5JG	R32A7JG
PVC Plastisol Coated, Goosewing Grey	R32A5GG	R32A7GG
PVC Plastisol Coated, Black		R32A7BL
PVC Plastisol Coated, Anthracite		R32A7AN
PVC Plastisol Coated, Chestnut		R32A7CH
PVC Plastisol Coated, Slate Blue		R32A7SB
PVC Plastisol Coated, Vandyke Brown		R32A7BR
PVC Plastisol Coated, Merlin Grey		R32A7MG
PVC Plastisol Coated, Moorland Green		R32A7MO
PVC Plastisol Coated, Olive Green		R32A7OG
PVC Plastisol Coated, White		R32A7WH
Galvanised	R32G5	R32G7

MULTI USE SHEETS FOR ROOFING AND CLADDING

At Cladco, our metal sheets are engineered for both roofing and cladding applications—combining strength, style, and dependable weather resistance. With pre-coated finishes for long-term protection and a low-maintenance design, they're an ideal solution for industrial, agricultural, and domestic projects.

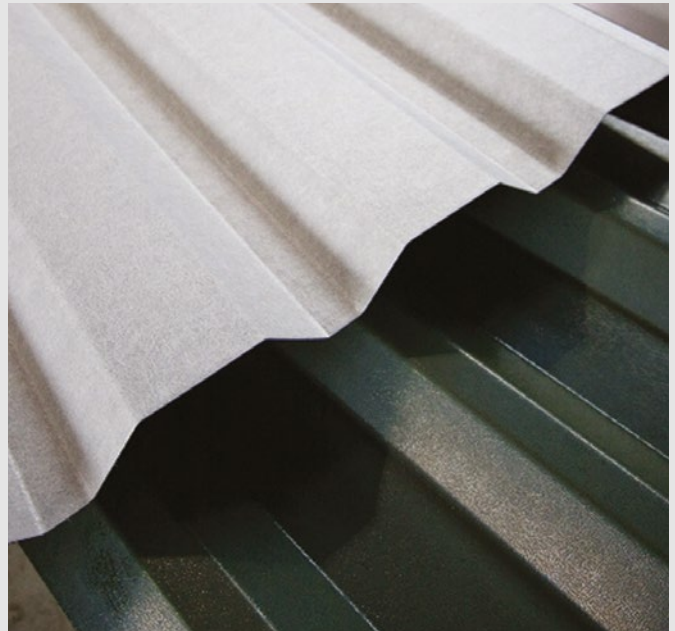




KEEP EVERYTHING UNDER YOUR ROOF DRY

One of the most fundamental roles of any building is to protect what's inside from the elements. If condensation from your metal roof is causing water to drip onto the contents below, that protection is compromised.

DripStop is a proven, cost-effective solution designed to prevent condensation drips before they become a problem. Whether you're safeguarding livestock, equipment, or stored goods, DripStop offers reliable performance backed by years of development and expertise—keeping your space dry and your contents safe.



WHERE TO USE DRIPSTOP:

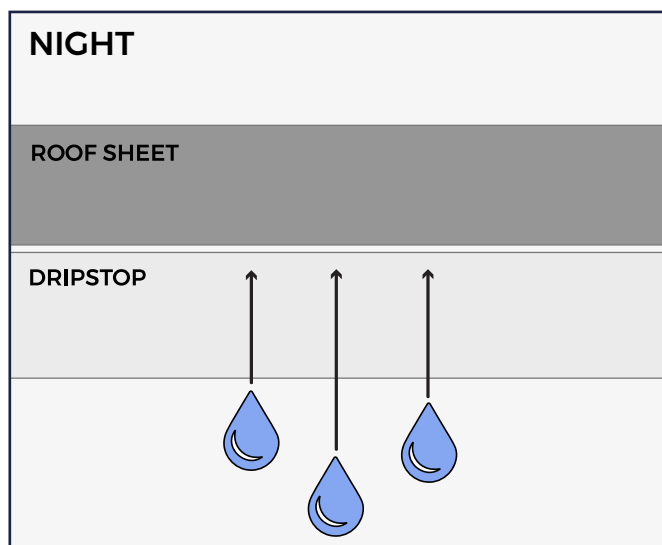
- DripStop is ideal for controlling condensation on uninsulated metal roofs, making it a smart choice for a wide range of buildings, including:
- Post-frame and agricultural buildings
- Steel-framed structures
- Self-storage facilities
- Workshops and detached garages
- Open-walled buildings
- Carports and storage units

WHY CHOOSE DRIPTSOP?

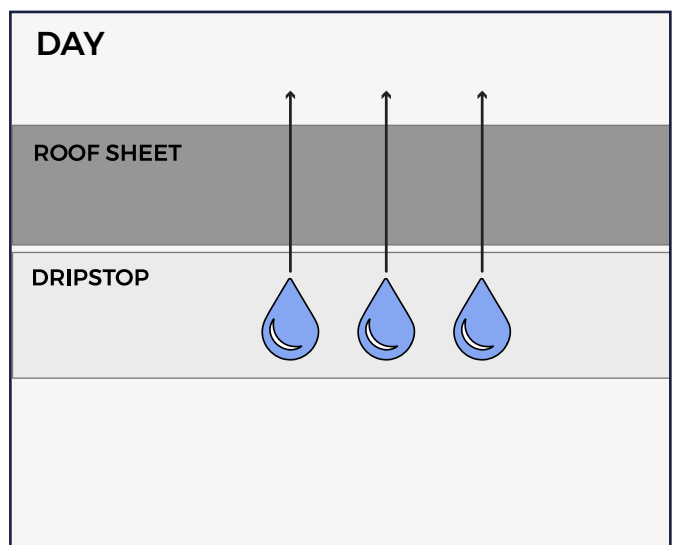
- Controls condensation before it drips
- Helps prevent corrosion caused by trapped moisture
- Discourages bird nesting under roofing sheets
- Reduces rain noise for a quieter interior
- Easy to clean and maintain
- Highly durable – tear and rip resistant
- Speeds up installation and reduces costs
- Improves safety by lowering injury risks during fitting

HOW DRIPSTOP WORKS

As temperatures drop in the evening and overnight, moisture in the air condenses on the underside of the metal roof. The DripStop membrane captures and holds this moisture, preventing it from dripping onto the contents below.



When temperatures rise again during the day, the moisture held in the membrane naturally evaporates and is released back into the atmosphere—keeping your space dry and protected without the need for additional insulation.



MADE IN BRITAIN

Cladco is a proud member of Made in Britain—the official collective mark for UK manufacturers who meet strict criteria for domestic production.

As part of this trusted network, we are licensed to use the Made in Britain trademark across our materials, highlighting our ongoing commitment to UK-based manufacturing, quality, and traceability.

This mark is more than just a symbol—it represents a national movement to support sustainable British industry, protect consumers, and champion local businesses. Only verified members can display the registered trademark, offering confidence that our products bearing the mark are genuinely made in Great Britain or Northern Ireland.



CUSTOMER BENEFITS OF BUYING FROM A MADE IN BRITAIN MEMBER

Trusted Quality, Recognised Nationwide

We're licensed to use the official Made in Britain trademark—giving you confidence that our products meet strict UK manufacturing standards and quality benchmarks. When you see the mark, you know you're buying trusted, UK-made goods.

Supporting British Industry & Local Jobs

By choosing Cladco, you're supporting ethical manufacturing, UK-based jobs, and transparent, traceable supply chains. These values matter—not just to us, but to customers who care about where and how their products are made.

Easier to Find, Easier to Trust

We're listed in the official Made in Britain Member Directory with live contact info, location pin, and verified branding—making it easier for customers and trade partners to connect with a trusted UK supplier.

Products Built to Last

The Made in Britain mark is your reassurance that our products are built with care, comply with UK regulations, and are made to perform. It's a symbol of quality and durability you can rely on.

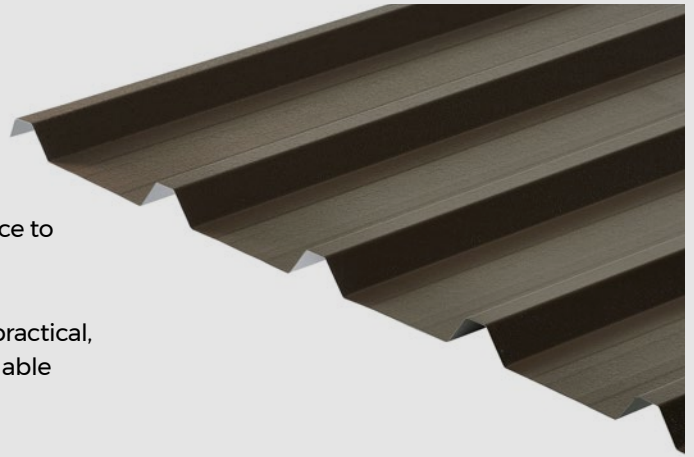


PVC PLASTISOL COATING - BUILT FOR PERFORMANCE

Our PVC plastisol-coated sheets are manufactured using a multi-layer system applied to zinc-coated, high-tensile steel and oven-cured for superior adhesion.

This process creates a tough, corrosion-resistant surface with excellent protection against the elements and strong resistance to wear and damage.

Available in a wide range of colours, plastisol coatings offer a practical, long-lasting solution that balances visual appeal with dependable performance.



PVC PLASTISOL CHART

					
Anthracite RAL7016	Black BS00E53	Chestnut BS04C39	Goosewing Grey BS10A05	Slate Blue BS18B29	Vandyke Brown BS08B29
					
Merlin Grey BS18B25	Juniper Green BS12B29	Moorland Green S12B21	Olive Green BS12B27	White BS00E55	



QUALITY

Plastisol is applied to a hot-dipped 55% Aluzinc-coated steel substrate, offering excellent corrosion resistance and up to six times the durability of standard galvanised steel.



UV RESISTANCE

The plastisol coating is made from polyvinyl chloride-based thermoplastic resins with short molecular chains, offering enhanced UV resistance, making it particularly well-suited to construction and external applications.



HEAT RESISTANCE

Performs between -40°C and +80°C. The coating withstands expansion and contraction without compromising its finish.



DURABILITY

Embossed 200-micron coating offers excellent scratch resistance, ideal for demanding environments. The leather-grain texture helps hide minor scuffs, making it highly durable during handling and installation.



LONGEVITY

PVC plastisol-coated metal sheets typically provide 15-25 years of protection before requiring maintenance or repainting, with a total lifespan of over 30 years in standard environments.



www.cladco.co.uk

T: 01837 659901 E: info@cladco.co.uk

CLADCO
PROFILES

PVC PLASTISOL PERFORMANCE OVERVIEW

POSCO C&C Plastisol – Long-Lasting Protection

POSCO C&C's plastisol coating offers superior performance compared to standard pre-painted finishes. With enhanced durability, excellent corrosion resistance, and advanced colour retention, it delivers long-term reliability in even the most demanding environments. Backed by a performance warranty of up to 30 years, it's a trusted choice for high-performance metal roofing and cladding applications.

- Key Features of POSCO C&C Plastisol-Coated Sheets
- 200µm abrasion-resistant topcoat for exceptional durability
- Leathergrain embossed finish for a refined, textured appearance
- Wide range of colours to suit various design requirements
- Aluzinc substrate for outstanding corrosion resistance
- 57µm reverse primer coat suitable for foam adhesion
- Excellent formability for complex profiles and shapes
- High colour stability for long-lasting visual appeal
- Suitable for low-pitch roofs – down to 1°
- Fire certified for added safety assurance

PVC Plastisol Coating Layers

TOPCOAT
PRIMER
PRE-TREATMENT
BASE METAL (STEEL)

	Test Results	Test Standards
Film Thickness	Ave. 200µm	EN 13523-1
Gloss (60°)	10-35%	EN 13523-2
Emboss	Leathergrain	
Abrasion resistance (CS-10, 1kg, 250rev)	10-15mg	EN 13523-16
Scatch resistance	> 5000g	EN 13523-12
Flexibility	T-Bend (OT, 16°C)	EN 13523-7
Reverse impact	18J	EN 13523-5
Salt Spray Resistance	1000 hours	EN 13523-8
Humidity Resistance	1500 hours	EN 13523-26
Internal Environment Classification	CPI5	EN 10169
Corrosion Resistance Category	RD5	EN 10169
UV Resistance Category	Ruv3	EN 10169
Fire Classification	C - s2, d0	EN 13051-1
Guarantee	Up to 30 years	

ALUZINC SUBSTRATE

- Plastisol is applied to a hot-dipped steel sheet coated with a 55% aluminium-zinc (aluzinc) alloy. This combination delivers exceptional long-term performance in harsh environments:
- Provides both the strong oxidation resistance of aluminium and the sacrificial cathodic protection of zinc
- Offers 3 to 6 times the durability of standard galvanised steel in corrosive conditions
- Maintains excellent formability and structural integrity, even at bend points, due to minimal micro-cracking during forming

PVC PLASTISOL COATING (POSCO C&C)

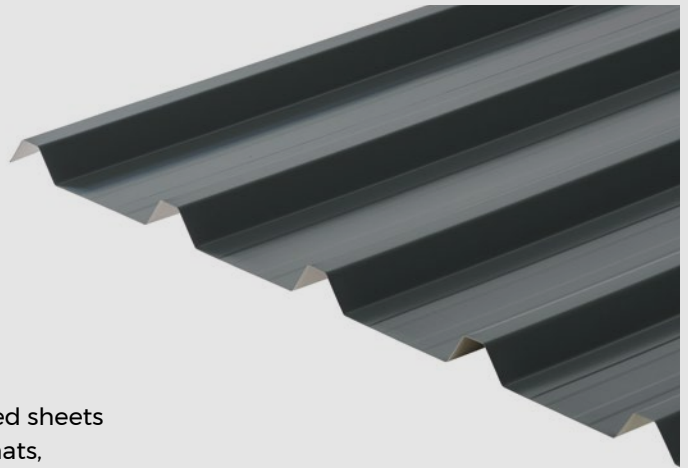
- POSCO C&C's Plastisol Coating combines the protective benefits of thermoplastic resins with outstanding flexibility and weather resistance:
- The coating can elongate up to 300-400% without cracking, making it ideal for heavy forming and processing
- Formulated with short-chain polyvinyl chloride-based resins for enhanced UV stability and colour retention
- Multi-layer system applied to Aluzinc-coated high-tensile steel and oven-cured for maximum adhesion and strength
- Delivers superior corrosion resistance, chemical protection, abrasion resistance, and climatic durability

POLYESTER PAINT COATED – VERSATILE & COST-EFFECTIVE

Our 25-micron polyester paint finish offers a smooth, economical solution with reliable weather resistance and moderate scratch protection.

In standard environments, maintenance is typically required after 8-12 years, with an overall lifespan of 20+ years.

Available in a wide range of colours, this coating delivers a balance of performance and visual appeal. Polyester-coated sheets are supplied in corrugated, box profile, and flat sheet formats, and feature a light grey reverse coating for added protection during installation and use.



POLYESTER PAINT COATING CHART

				
Slate Blue BS18B29	Juniper Green BS12B29	White BS00E55	Black BS00E53	Light Grey BS00A09



QUALITY

This finish features a fine, smooth polyester coating, offering excellent weather resistance at an economical price point. Applied to quality galvanised steel, it provides a clean, uniform appearance and reliable performance.



UV RESISTANCE

Offers reliable UV protection for general outdoor applications, with colours remaining stable for several years. In typical UK conditions, the finish performs well, making it a practical choice in areas with moderate sun exposure.



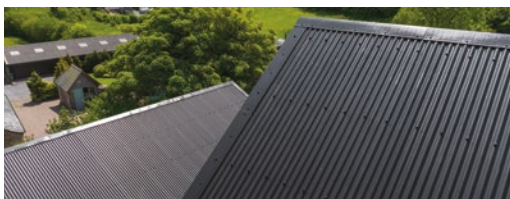
HEAT RESISTANCE

Thermally stable from -40°C to +80°C, this coating resists blistering, peeling, and degradation in both high and low temperature conditions—ensuring reliable performance year-round.



DURABILITY

The 25-micron smooth polyester coating offers moderate scratch resistance and should be handled with care to prevent scuffs or surface marks—especially during transport and installation.



LONGEVITY

Provides 8-12 years of protection before maintenance is required, with an expected lifespan of 20+ years in standard UK environments.



www.cladco.co.uk

T: 01837 659901 E: info@cladco.co.uk

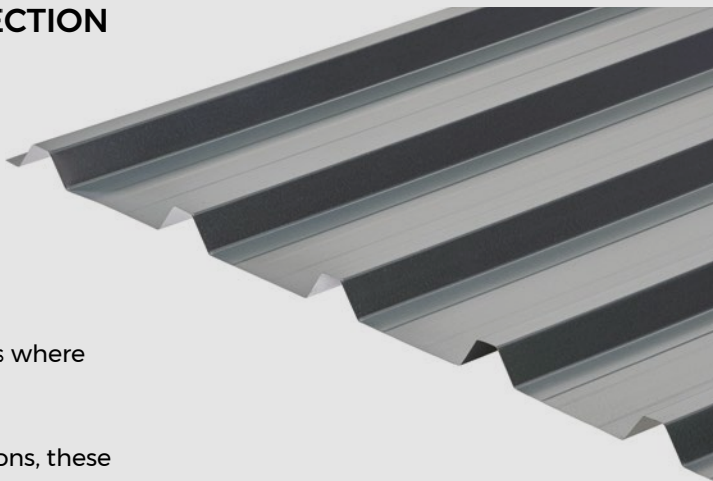
CLADCO
PROFILES

GALVANISED – COST-EFFECTIVE PROTECTION WITH A CLASSIC FINISH

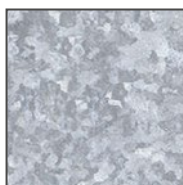
Cladco's galvanised roof sheets feature a protective zinc coating, offering a durable, low-maintenance, and economical solution for a wide range of applications.

With their traditional metallic appearance, galvanised finishes are ideal for agricultural and industrial projects where a coloured coating isn't required.

Available in box profile, corrugated, and flat sheet options, these sheets are suitable for use in roofing, flashings, weatherproofing, and internal lining of floors or walls.



GALVANISED COATING CHART



Galvanised



QUALITY

Manufactured from hot-dip galvanised steel with a 275g/m² zinc coating, this finish offers a durable, cost-effective, and low-maintenance solution with a classic metallic appearance.



UV RESISTANCE

Galvanised steel is inherently UV stable. While the bright metallic finish will naturally weather to a muted grey patina over time, it will not fade, peel, or deteriorate under sunlight—offering long-term reliability without the need for additional coatings.



HEAT RESISTANCE

Galvanised steel offers excellent thermal resilience. With no painted topcoat, there's nothing to degrade, blister, or peel—ensuring consistent performance in both high and low temperature conditions.



DURABILITY

The uncoated zinc finish provides moderate scratch resistance. While exposed areas are more susceptible to abrasion, minor scratches can self-heal over time through natural zinc oxidation, helping maintain protection in everyday use.



LONGEVITY

Galvanised sheets typically last up to 20 years, though they may require earlier maintenance than coated alternatives—particularly in harsh or coastal environments.

To prevent white rust, sheets should be stored in a dry, well-ventilated area. Prolonged exposure to trapped moisture can result in a milky or chalky surface appearance, affecting aesthetics but not structural performance.



www.cladco.co.uk

T: 01837 659901 E: info@cladco.co.uk

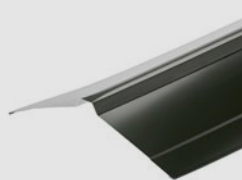
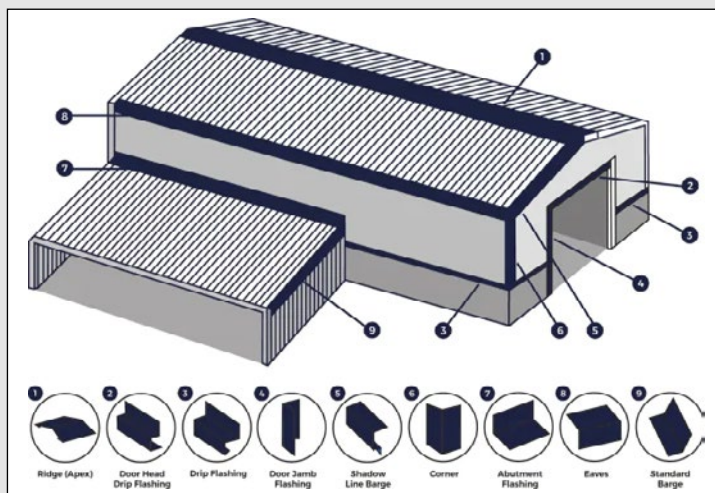
CLADCO
PROFILES

STANDARD FLASHINGS

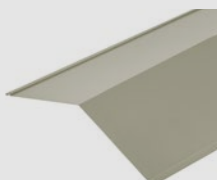
Flashings play a vital role in sealing corners, edges, joints, and other vulnerable areas, helping to prevent water ingress and enhance the finished look of your roof. From ridges to eaves, our steel flashings are available in a variety of styles, finishes, and colours to match your roofing sheets—delivering both protection and a professional appearance.

- Seals corners, edges, and junctions
- Helps prevent leaks and water damage
- Available in multiple colours to complement your sheets.

For bespoke solutions, see our Custom-Made Flashings range.



NORDIC RIDGE



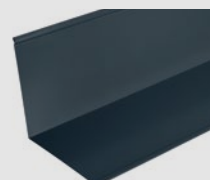
STANDARD RIDGE



DRIPTRAY FLASHING



BARGE FLASHING



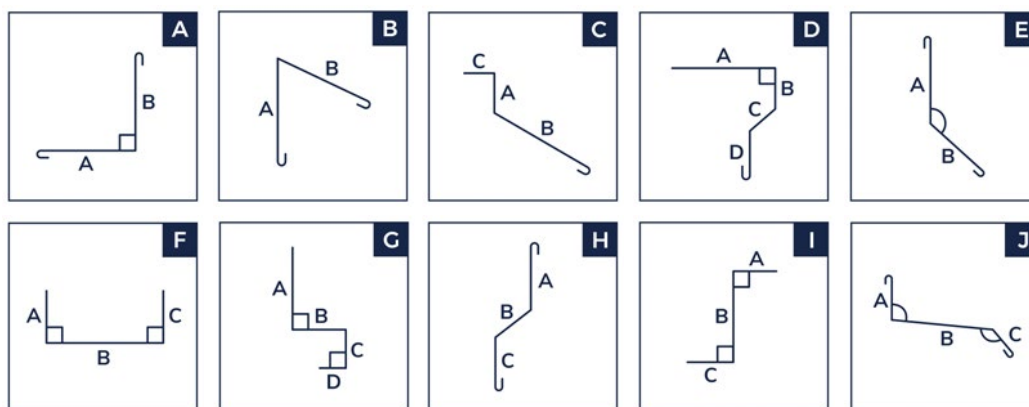
ABUTMENT FLASHING

CUSTOM-MADE FLASHINGS

For non-standard roof designs or unique architectural details, custom flashings provide a precise, watertight finish tailored to your project.

Manufactured from durable 0.7mm flat sheet, Cladco's bespoke flashings are made to your exact specifications—up to 1200mm wide and 3m in length.

- Fabricated to your specified angles and sizes
- Available in a range of coatings and colours
- Simply provide dimensions using our lettered diagram
- A made-to-measure flashing ensures the best fit, protection, and finish—designed with your build in mind.



HANDLING & STORAGE INSTRUCTIONS

To ensure safety and maintain the condition of your sheets, please follow the guidelines below when handling and storing:

- Always wear protective gloves and sturdy footwear – sheet edges can be sharp and may cause injury if mishandled
- Use two-person lifting where safe and appropriate, particularly in windy or exposed environments
- Store sheets indoors where possible, away from moisture and open doorways
- If outdoor storage is unavoidable, use a breathable cover and elevate sheets off the ground to prevent water damage, staining, or corrosion
- These steps help preserve product quality and ensure safer handling on-site.



AFTERCARE ADVICE

At Cladco, we recommend carrying out simple, routine checks to keep your roofing sheets performing at their best. While our materials are designed for durability, a little ongoing care can help preserve their appearance and extend their lifespan—without the need for intensive maintenance.

- Inspect your roof at least once a year
- Clear away leaves, moss, and debris
- Check that fixings and flashings remain secure
- Regular aftercare helps protect your investment and ensures long-term performance in all conditions.

CUSTOMER SUPPORT

At Cladco, we're committed to providing excellent service alongside our high-quality, great-value products.

Whether you need help selecting the right roofing sheet, choosing the correct flashing, or understanding installation steps, our experienced team is here to support you. We also offer free samples, installation guides, and detailed data sheets to help you get the best results from your project.

- Friendly, expert advice at every stage
- Comprehensive installation guides and technical resources
- Call us on 01837 659 901 – we're here to help



INSTALLATION GUIDES

Correct installation is key to a long-lasting, weather-resistant finish. Our easy-to-follow guides walk you through each step—from sheet alignment and fixing methods to correct flashing placement.

Whether you're a first-time DIYer or a seasoned tradesperson, our Help & Advice section provides the confidence and clarity you need to complete your project properly.

Scan the QR codes below to access:

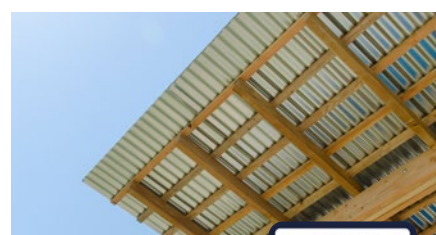
- Roofing Sheet Installation Guide
- Flashings Installation Guide
- Roofing Help & Advice



**BOX PROFILE
INSTALLATION
GUIDE**



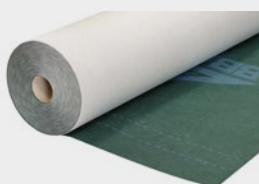
**FLASHING
INSTALLATION
GUIDE**



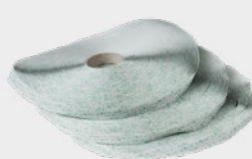
**ROOFING
HELP AND
ADVICE**



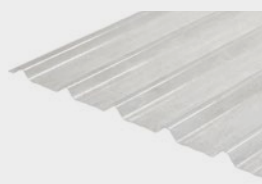
PRODUCT ACCESSORIES



**BREATHABLE
MEMBRANE**



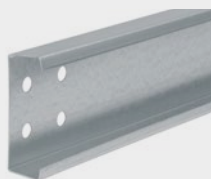
**MASTIC
LAPPING TAPE**



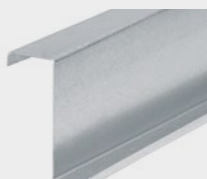
**GRP TRANSLUCENT
ROOF SHEETS**



COLOUR CAPS



C PURLIN



Z PURLIN



FOAM FILLERS



**STITCHING
SCREWS**



**SCREWS TO
WOOD**



www.cladco.co.uk

T: 01837 659901 E: info@cladco.co.uk

CLADCO
PROFILES