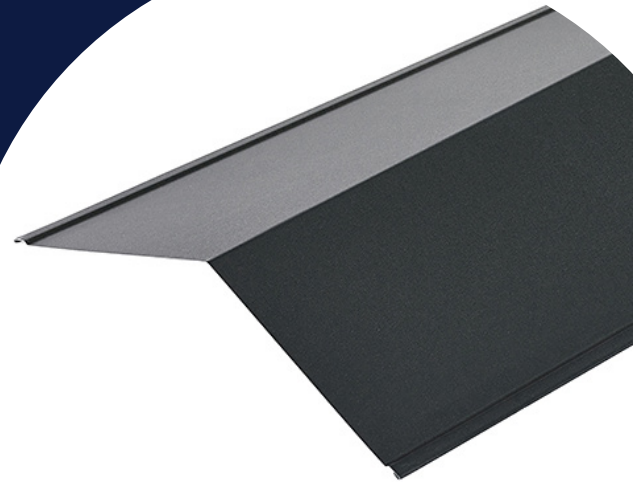


130° Ridge Flashings

GreenCoat® Pural BT

Ridge pieces are used at the apex of the roof to join the two sides together. Cladco Ridges are folded to a 130-degree internal angle and will flex 10 – 15 degrees either way, dependent on the angle of your roof. Ridges are a major component in any profiled clad apex roof and as they are available in a range of colours and finishes to match our roof sheets, they will enhance the aesthetics of any building.



Metal Roof Barge Flashings for your Roofing

Roof edge flashing ridges include a safety welt on the edge to increase the strength of the material and come as a 3m length as standard. When fitting the ridge please remember to allow a minimum of 100mm overlap from one ridge piece to the next. Ridge pieces sit on top of the roofing sheets and are stitched (using st22 stitching screws) to the sheet below to secure them in place.

Used at the apex join of two sides of the roof, ridge flashings are a necessary part of any profiled clad building and with the range and colours that are available, can enhance the aesthetics of any structure.

Our ridges include a safety welt to increase the strength of the material.

Please note: The 150 x 150 flashings give a coverage of 142 x 142 due to the 8mm welt.
The 200 x 200 flashings give a coverage of 192 x 192 due to the 8mm welt.

SPECIFICATIONS	
Length	3 metres
Sizes available	150mm x 150mm or 200mm x 200mm
Angle	130° internal angle
Overlap	Allow 150mm

PLEASE NOTE – Extra care should always be taken when handling metal sheets and flashings we advise using the correct type of Glove when handling or moving metal sheets and flashings.



01837 659901 info@cladco.co.uk
www.cladco.co.uk

Beardown Road, Exeter Road Industrial Estate, Okehampton EX20 1UA